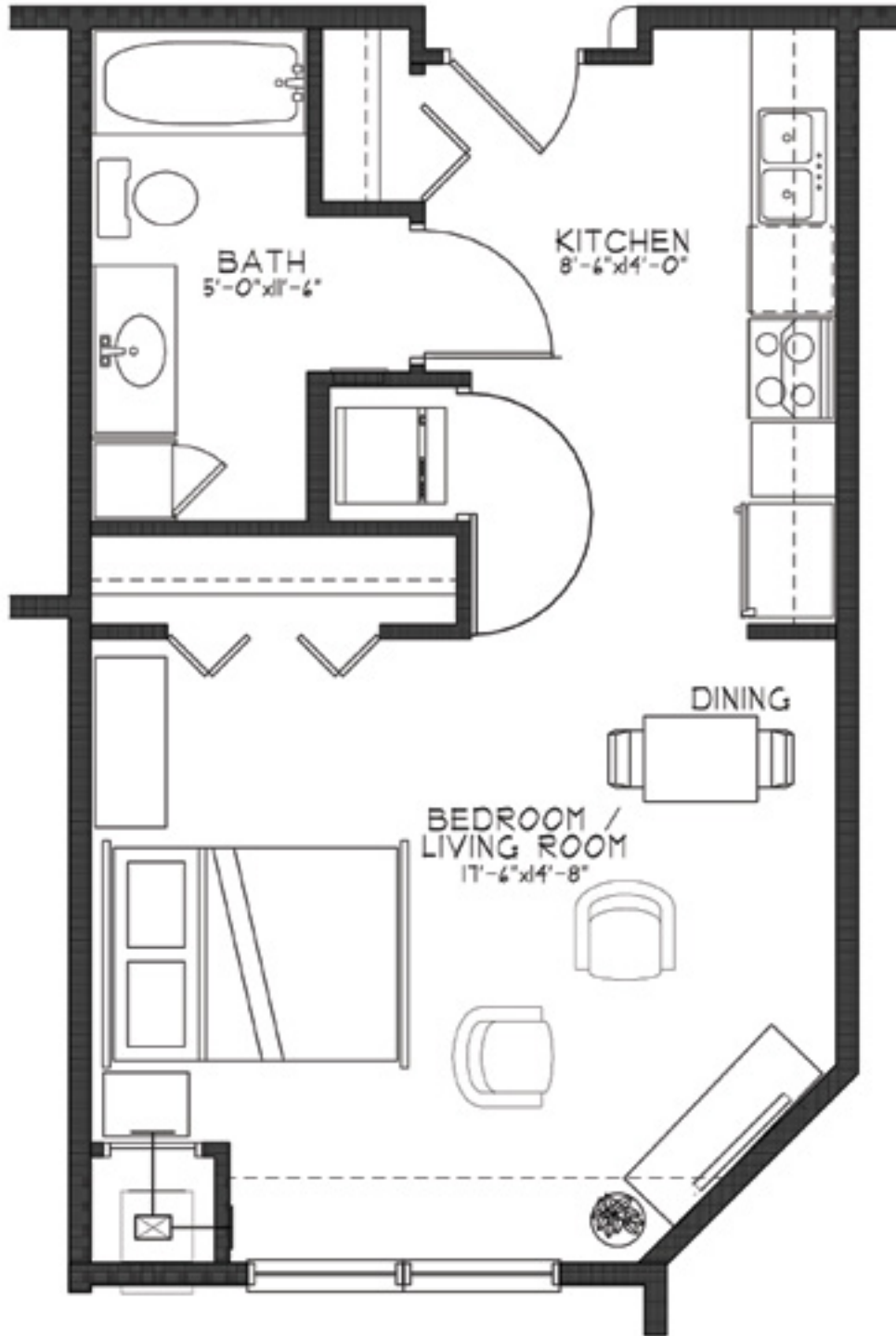




THE PILLARS OF HIGHLAND PARK

SENIOR LIVING | ASSISTED LIVING | MEMORY CARE

ASPEN | Studio | 518 SF | Apartments: 211, 311



1925 Norfolk Ave | St Paul, MN 55116 | 651-699-4038 | PillarsSeniorLiving.com/highlandparkmn

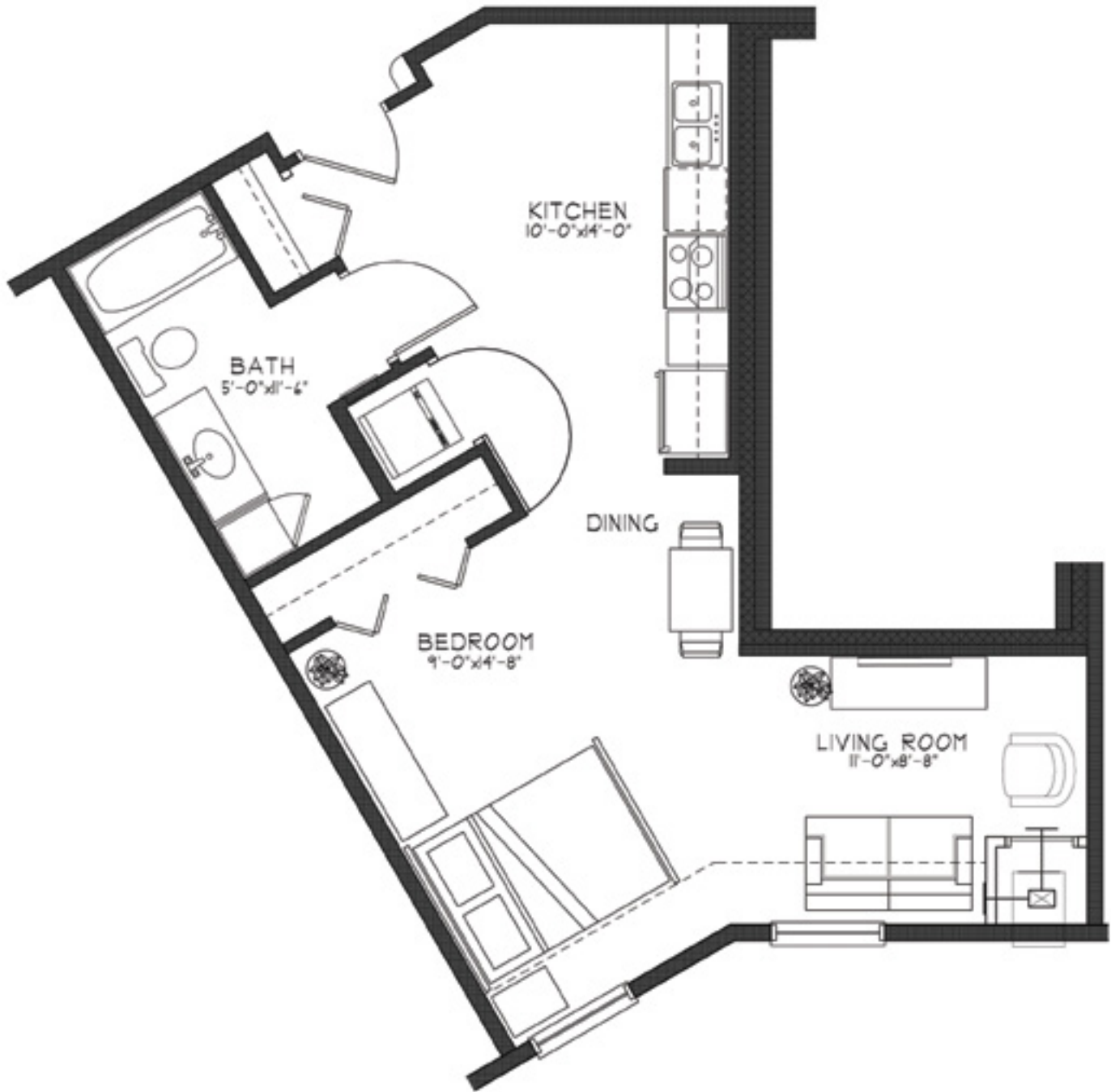




THE PILLARS OF HIGHLAND PARK

SENIOR LIVING | ASSISTED LIVING | MEMORY CARE

BIRCH | Studio | 594 SF | Apartments: 203, 303, 403



1925 Norfolk Ave | St Paul, MN 55116 | 651-699-4038 | PillarsSeniorLiving.com/highlandparkmn



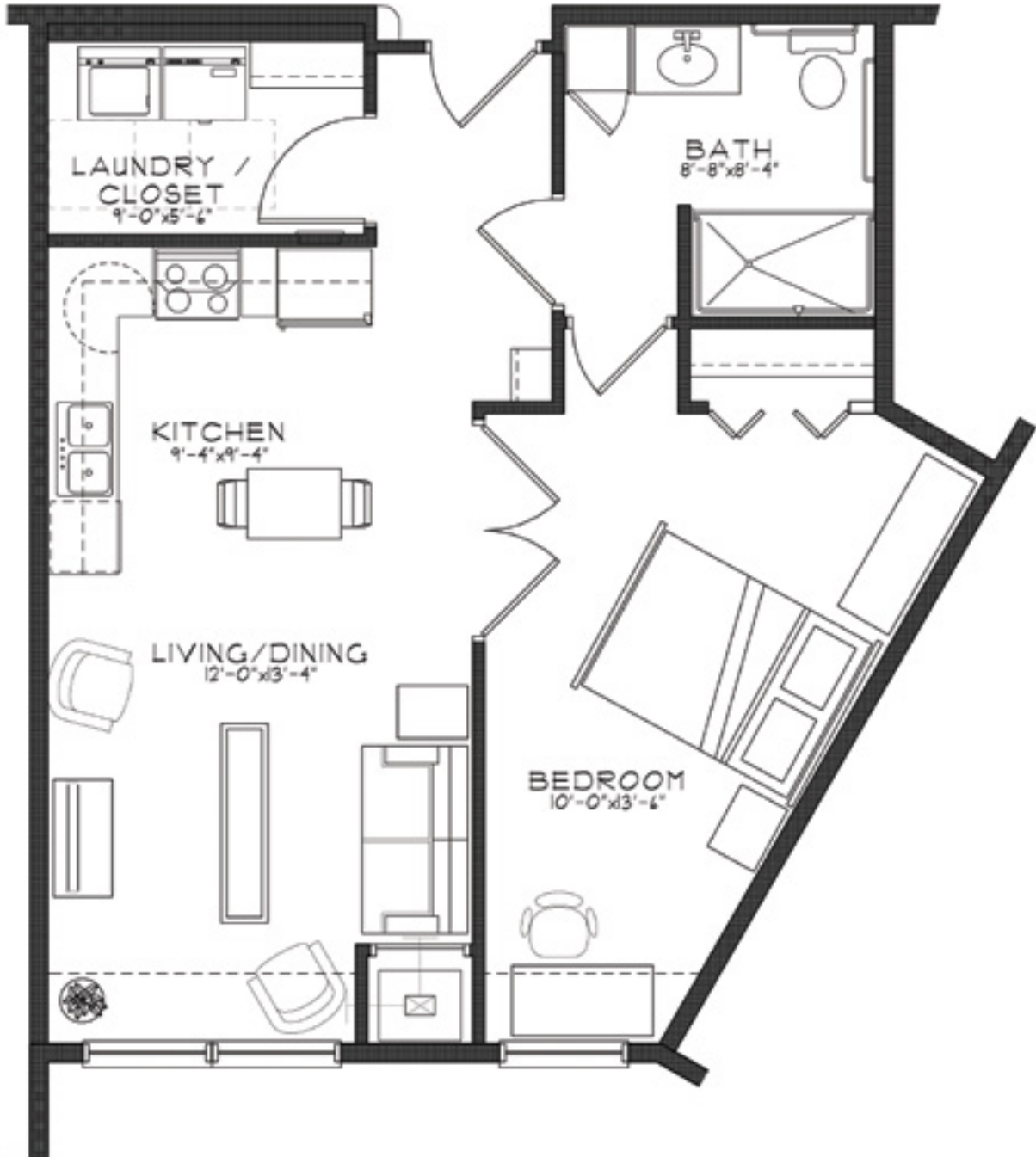
EBENEZER
Choices for vibrant senior living



THE PILLARS OF HIGHLAND PARK

SENIOR LIVING | ASSISTED LIVING | MEMORY CARE

ELM | 1 Bedroom | 686 SF | Apartments: 212, 216, 312, 316, 412, 416



1925 Norfolk Ave | St Paul, MN 55116 | 651-699-4038 | PillarsSeniorLiving.com/highlandparkmn



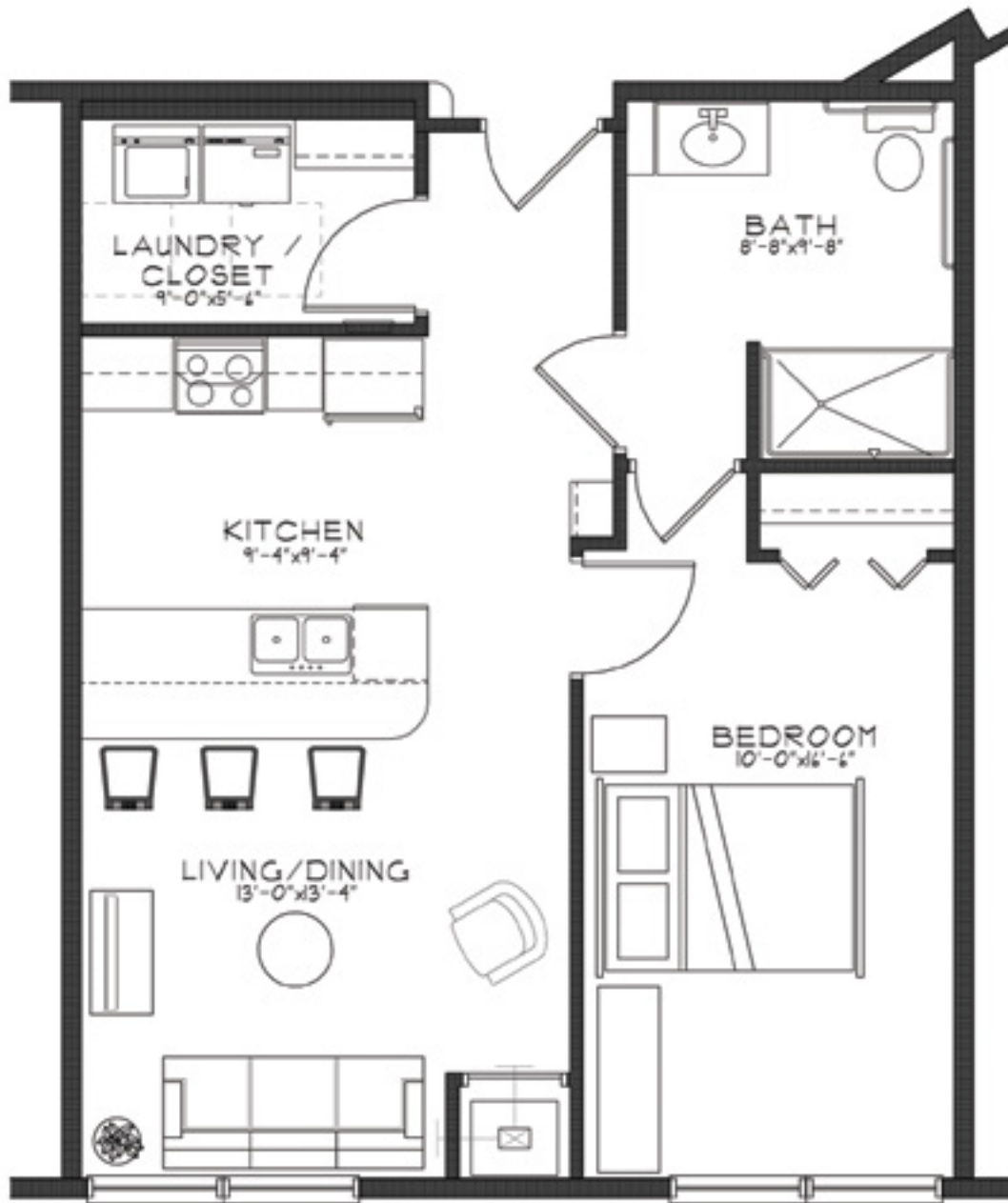
EBENEZER
Choices for vibrant senior living



THE PILLARS OF HIGHLAND PARK

SENIOR LIVING | ASSISTED LIVING | MEMORY CARE

CHERRY | 1 Bedroom | 709 SF | Apartment: 318 



1925 Norfolk Ave | St Paul, MN 55116 | 651-699-4038 | PillarsSeniorLiving.com/highlandparkmn



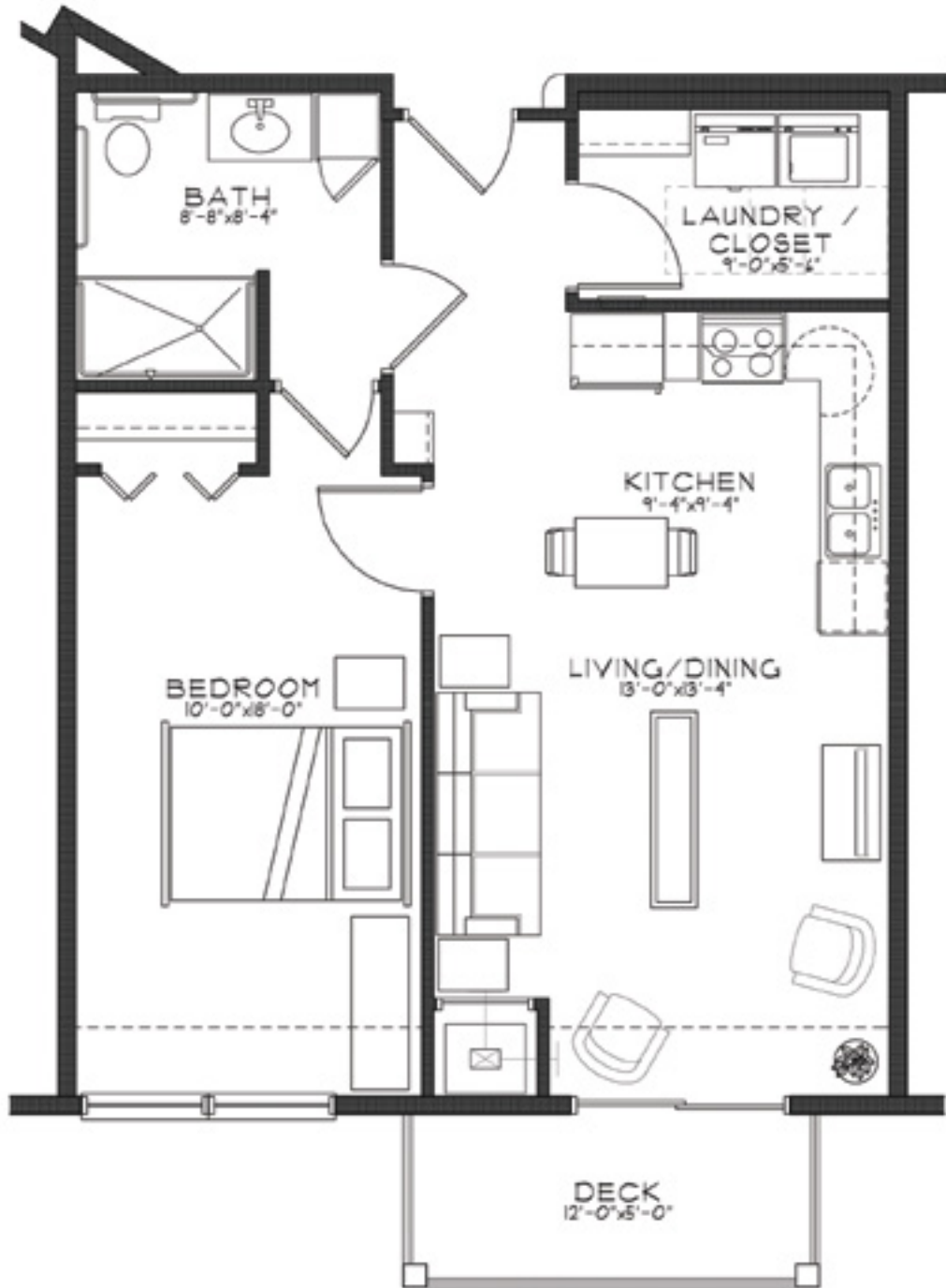
EBENEZER
Choices for vibrant senior living



THE PILLARS OF HIGHLAND PARK

SENIOR LIVING | ASSISTED LIVING | MEMORY CARE

COTTONWOOD 1 | 1 Bedroom + Deck | 709 SF | Apartments: 204, 210, 304, 310, 404, 410



1925 Norfolk Ave | St Paul, MN 55116 | 651-699-4038 | PillarsSeniorLiving.com/highlandparkmn

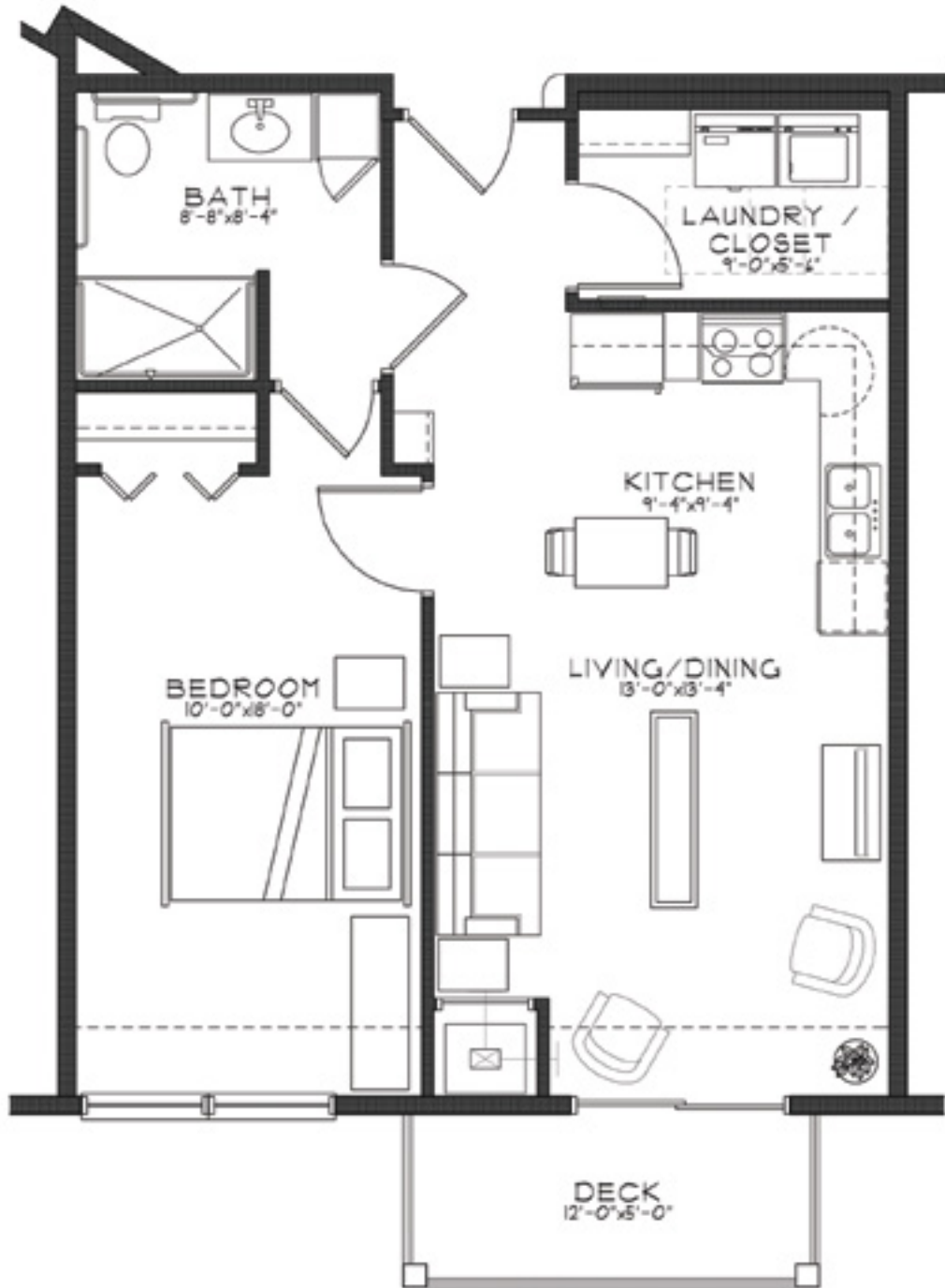




THE PILLARS OF HIGHLAND PARK

SENIOR LIVING | ASSISTED LIVING | MEMORY CARE

COTTONWOOD 2 | 1 Bedroom | 709 SF | Apartments: 205, 207, 305, 307, 317, 405, 407, 418



1925 Norfolk Ave | St Paul, MN 55116 | 651-699-4038 | PillarsSeniorLiving.com/highlandparkmn





THE PILLARS OF HIGHLAND PARK

SENIOR LIVING | ASSISTED LIVING | MEMORY CARE

SPRUCE | 1 Bedroom + Deck | 756 SF | Apartments: 206, 306, 406



1925 Norfolk Ave | St Paul, MN 55116 | 651-699-4038 | PillarsSeniorLiving.com/highlandparkmn

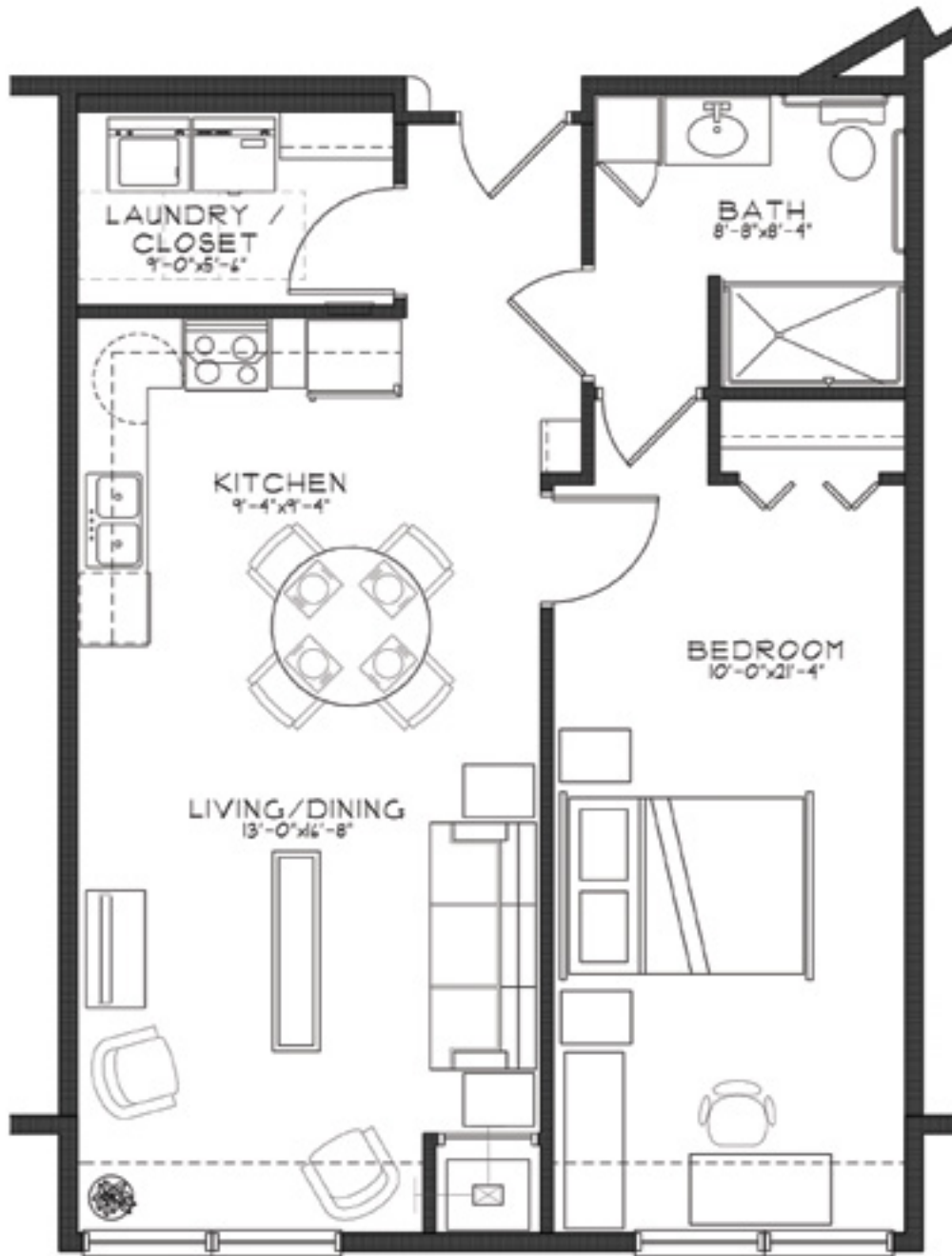




THE PILLARS OF HIGHLAND PARK

SENIOR LIVING | ASSISTED LIVING | MEMORY CARE

POPLAR | 1 Bedroom | 791 SF | Apartments: 208, 214, 308, 314, 408, 414



1925 Norfolk Ave | St Paul, MN 55116 | 651-699-4038 | PillarsSeniorLiving.com/highlandparkmn



EBENEZER
Choices for vibrant senior living



THE PILLARS OF HIGHLAND PARK

SENIOR LIVING | ASSISTED LIVING | MEMORY CARE

OAK | 1 Bedroom | 836 SF | Apartments: 209, 309, 409



1925 Norfolk Ave | St Paul, MN 55116 | 651-699-4038 | PillarsSeniorLiving.com/highlandparkmn

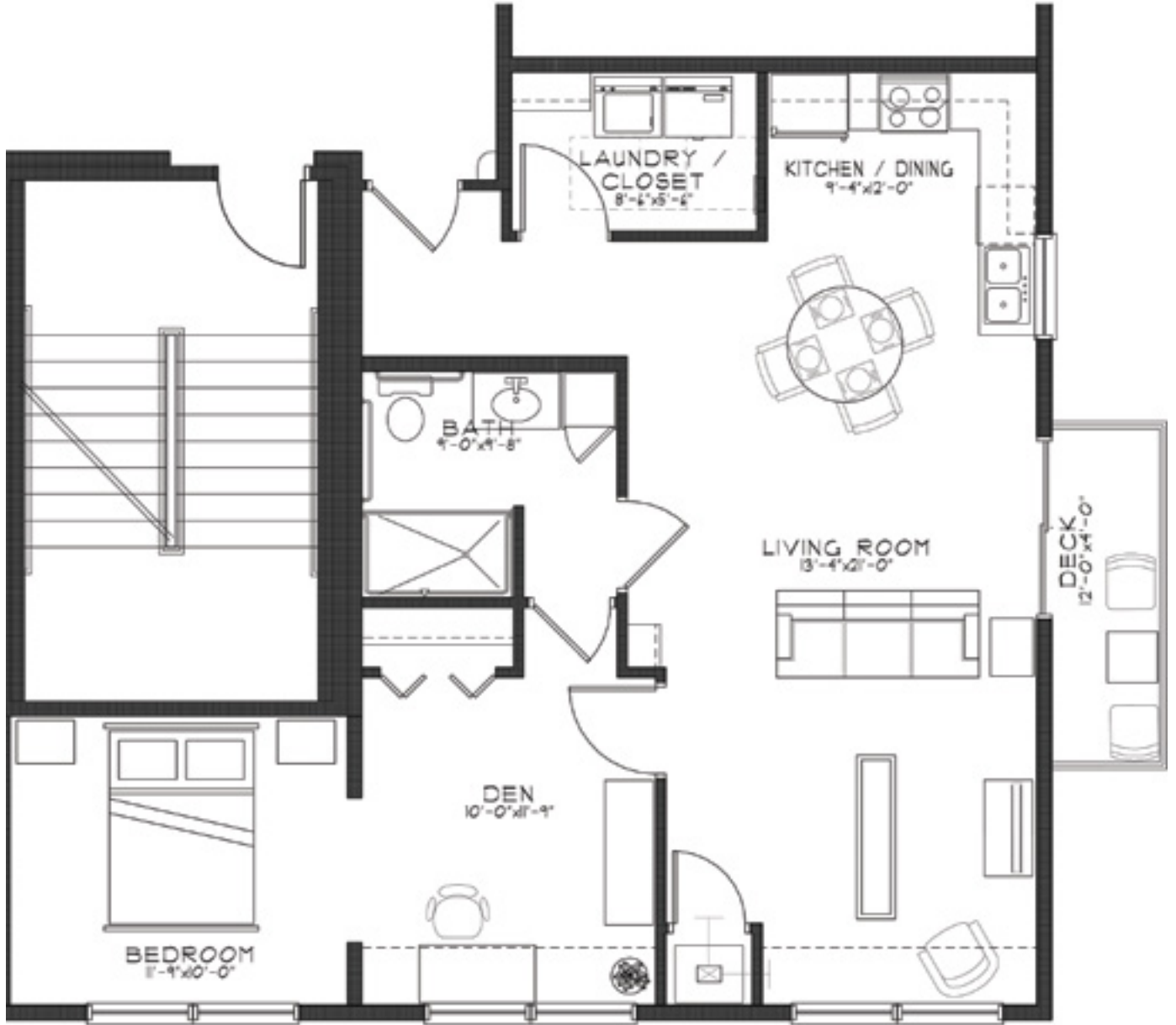




THE PILLARS OF HIGHLAND PARK

SENIOR LIVING | ASSISTED LIVING | MEMORY CARE

MULBERRY | 1 Bedroom + Den + Deck | 913 SF | Apartments: 320, 420



1925 Norfolk Ave | St Paul, MN 55116 | 651-699-4038 | PillarsSeniorLiving.com/highlandparkmn

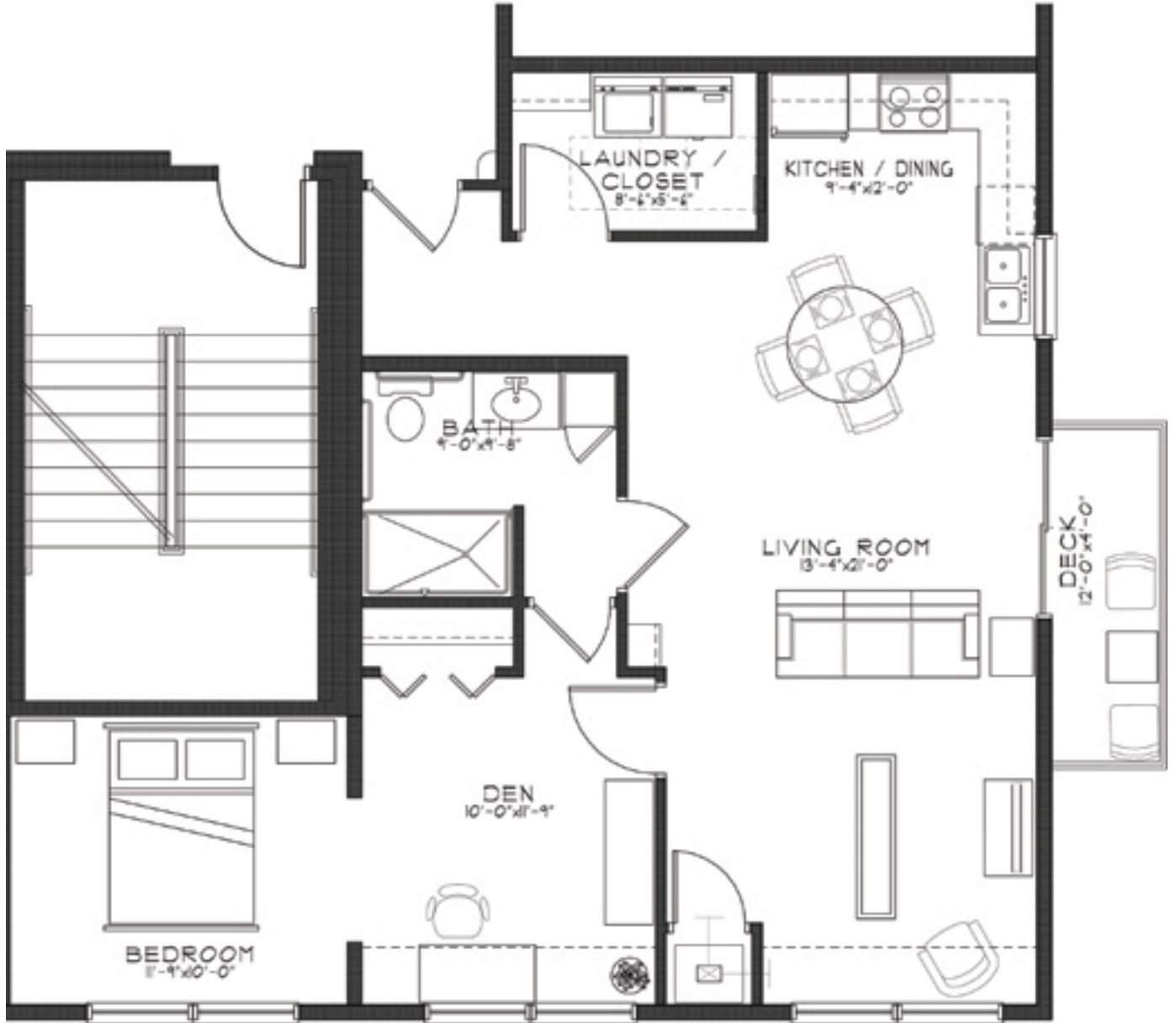




THE PILLARS OF HIGHLAND PARK

SENIOR LIVING | ASSISTED LIVING | MEMORY CARE

JUNIPER | 1 Bedroom + Den | 1,012 SF | Apartment: 220 



1925 Norfolk Ave | St Paul, MN 55116 | 651-699-4038 | PillarsSeniorLiving.com/highlandparkmn

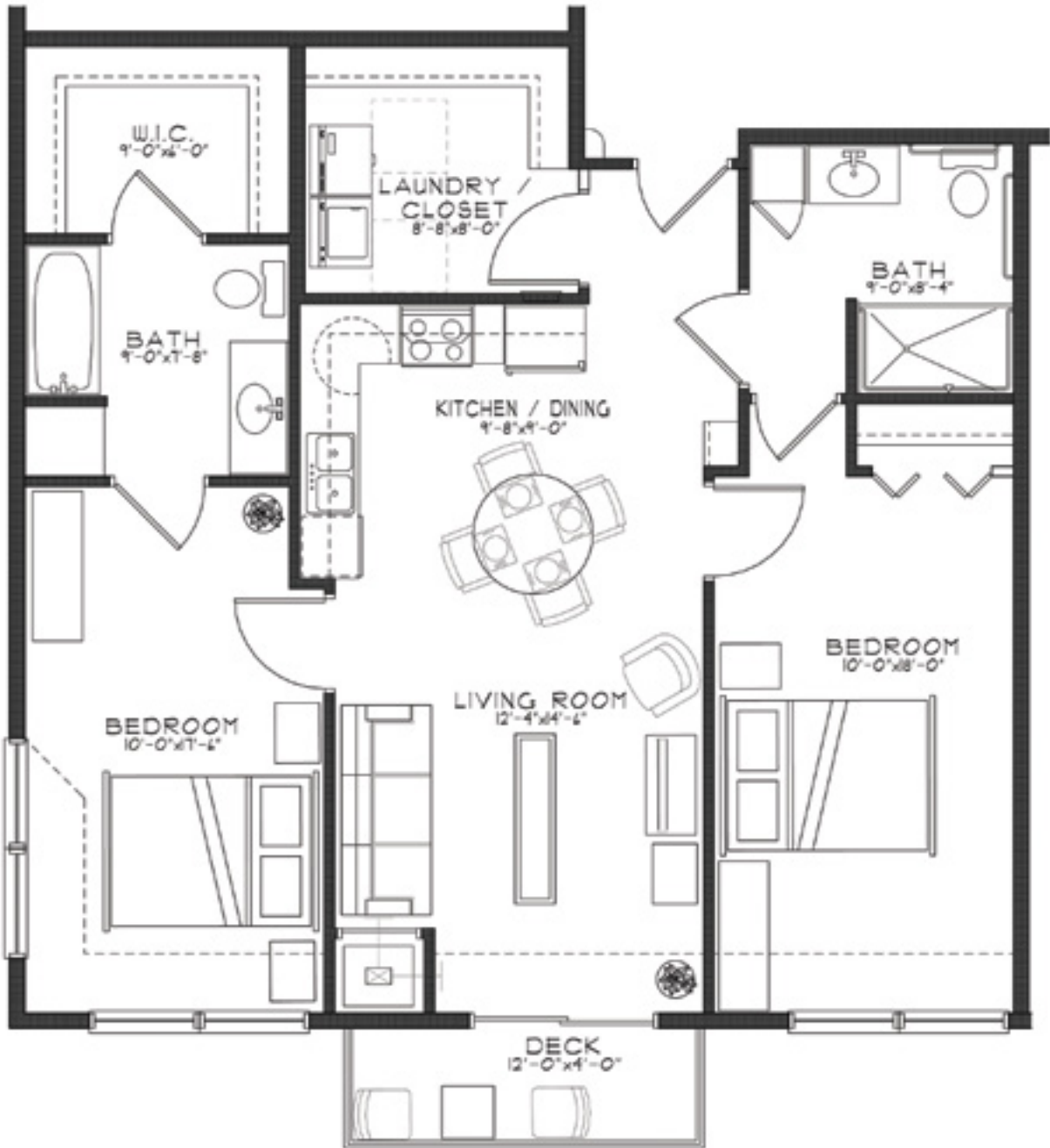




THE PILLARS OF HIGHLAND PARK

SENIOR LIVING | ASSISTED LIVING | MEMORY CARE

HICKORY | 2 Bedrooms + Den | 1,060 SF | Apartments: 201, 202, 301, 302, 401, 402, 419



1925 Norfolk Ave | St Paul, MN 55116 | 651-699-4038 | PillarsSeniorLiving.com/highlandparkmn



EBENEZER
Choices for vibrant senior living



THE PILLARS OF HIGHLAND PARK

SENIOR LIVING | ASSISTED LIVING | MEMORY CARE

WILLOW | 2 Bedrooms | 1,169 SF | Apartments: 215, 315, 415



1925 Norfolk Ave | St Paul, MN 55116 | 651-699-4038 | PillarsSeniorLiving.com/highlandparkmn

