

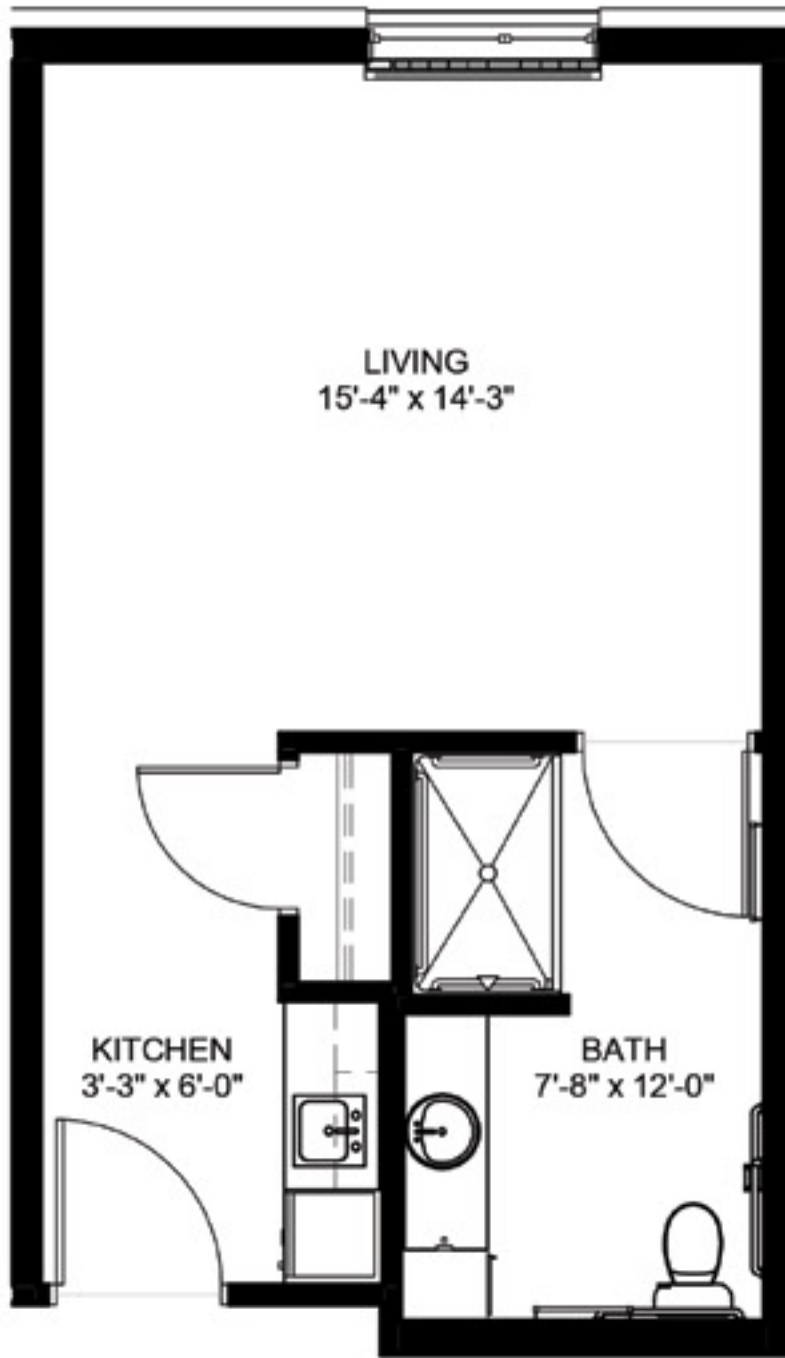


THE PILLARS

OF SHOREWOOD LANDING

SENIOR LIVING | ASSISTED LIVING | MEMORY CARE

GIDEON | MC | Studio | 435 SF | Apartments: 129, 133, 136, 137, 140, 145, 157, 163



6000 Chaska Road | Shorewood, MN 55331 | 952-401-7444 | PillarsSeniorLiving.com/shorewoodlanding



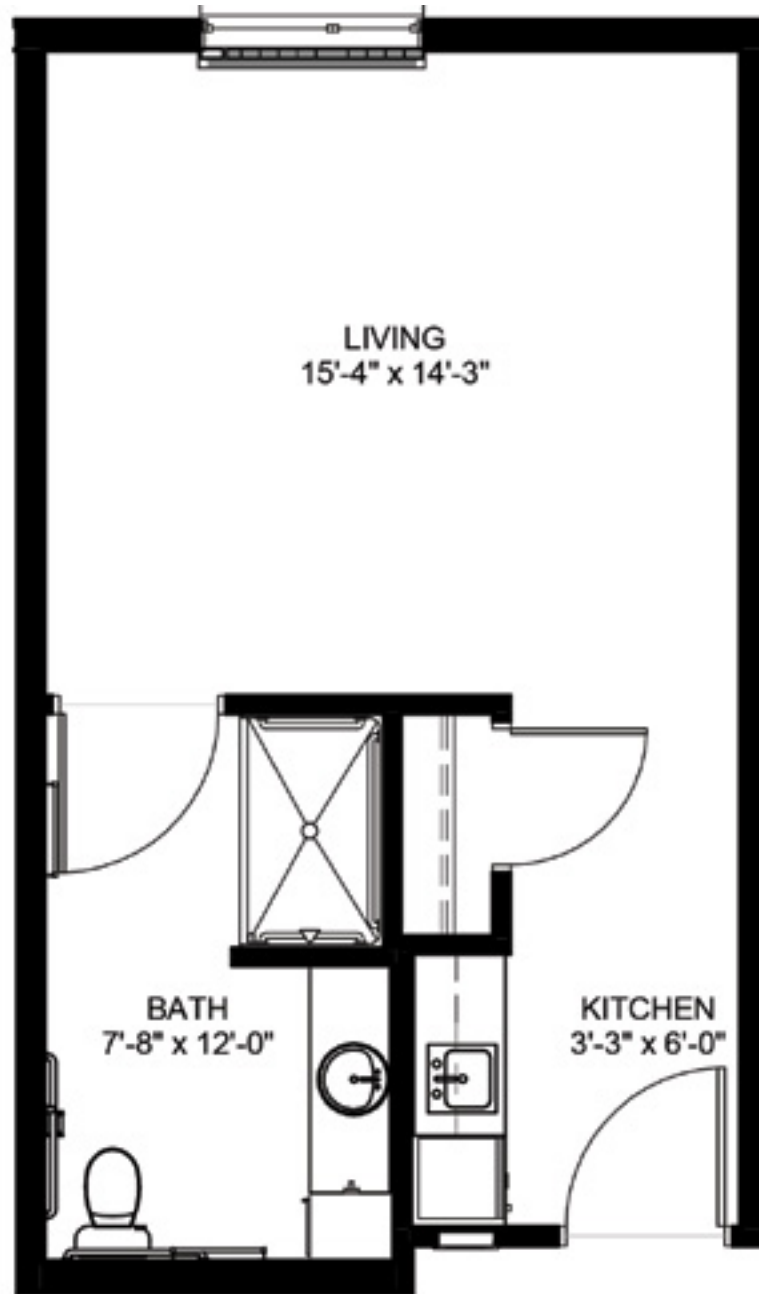


THE PILLARS

OF SHOREWOOD LANDING

SENIOR LIVING | ASSISTED LIVING | MEMORY CARE

GIDEON | MC | Studio | 435 SF | Apartments: 125, 131, 143, 151, 155



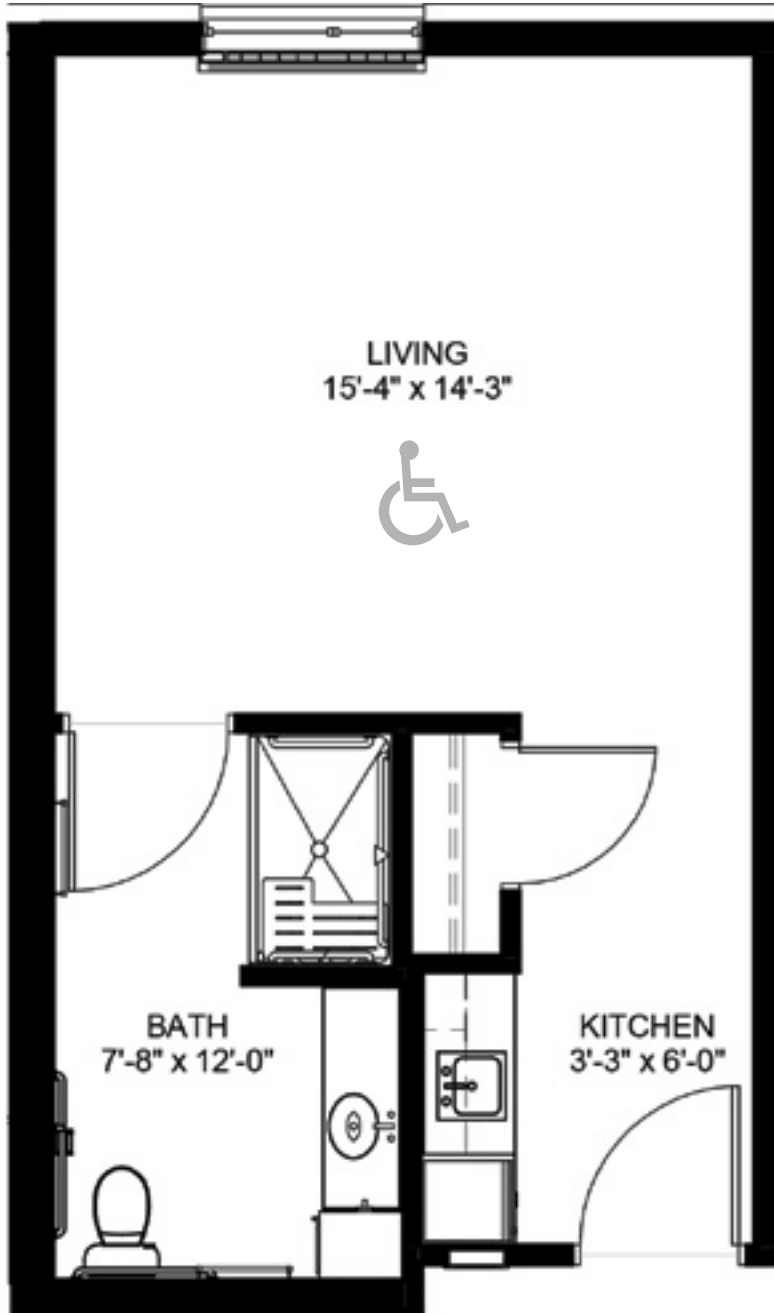


THE PILLARS

OF SHOREWOOD LANDING

SENIOR LIVING | ASSISTED LIVING | MEMORY CARE

GIDEON | MC | Studio | 435 SF | Apartments: 121, 159



6000 Chaska Road | Shorewood, MN 55331 | 952-401-7444 | PillarsSeniorLiving.com/shorewoodlanding



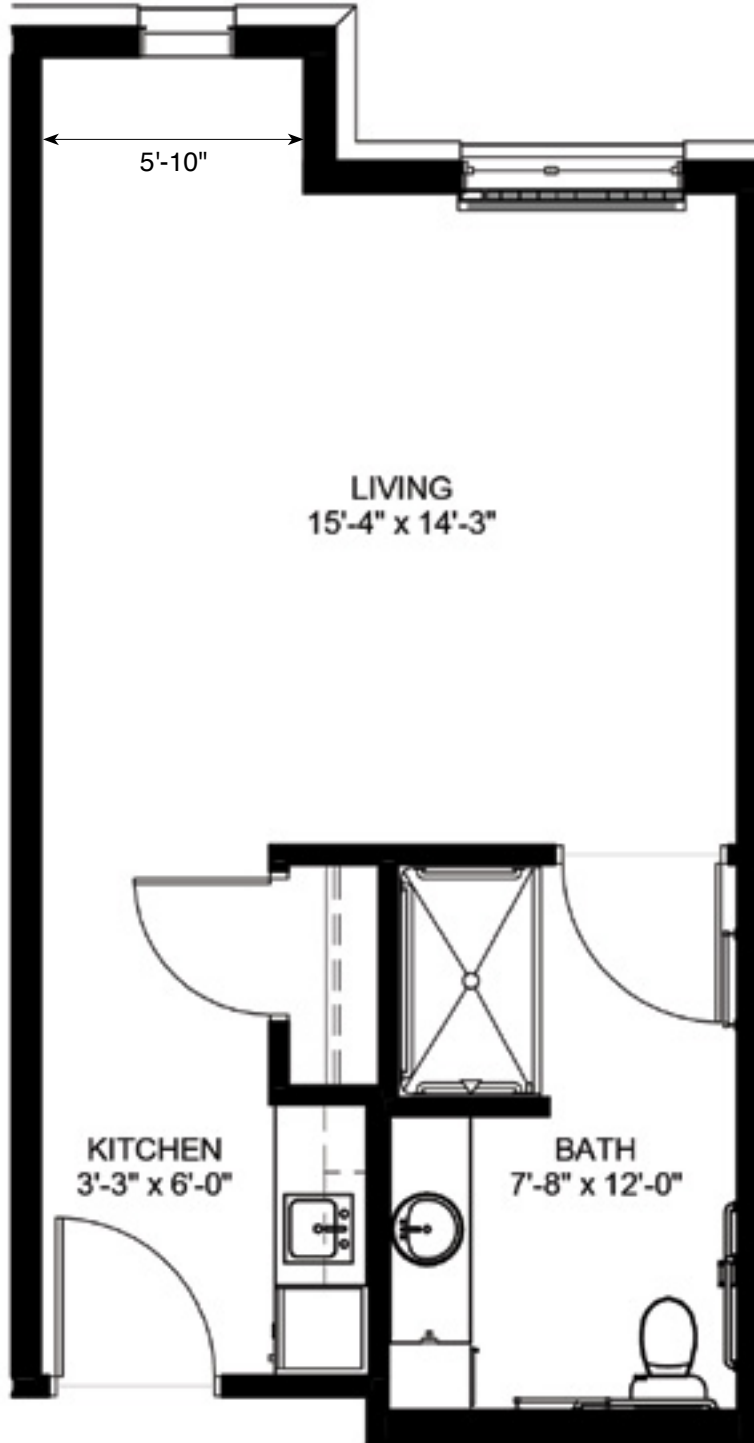


THE PILLARS

OF SHOREWOOD LANDING

SENIOR LIVING | ASSISTED LIVING | MEMORY CARE

GIDEON | MC | Studio | 455 SF | Apartment: 123



6000 Chaska Road | Shorewood, MN 55331 | 952-401-7444 | PillarsSeniorLiving.com/shorewoodlanding



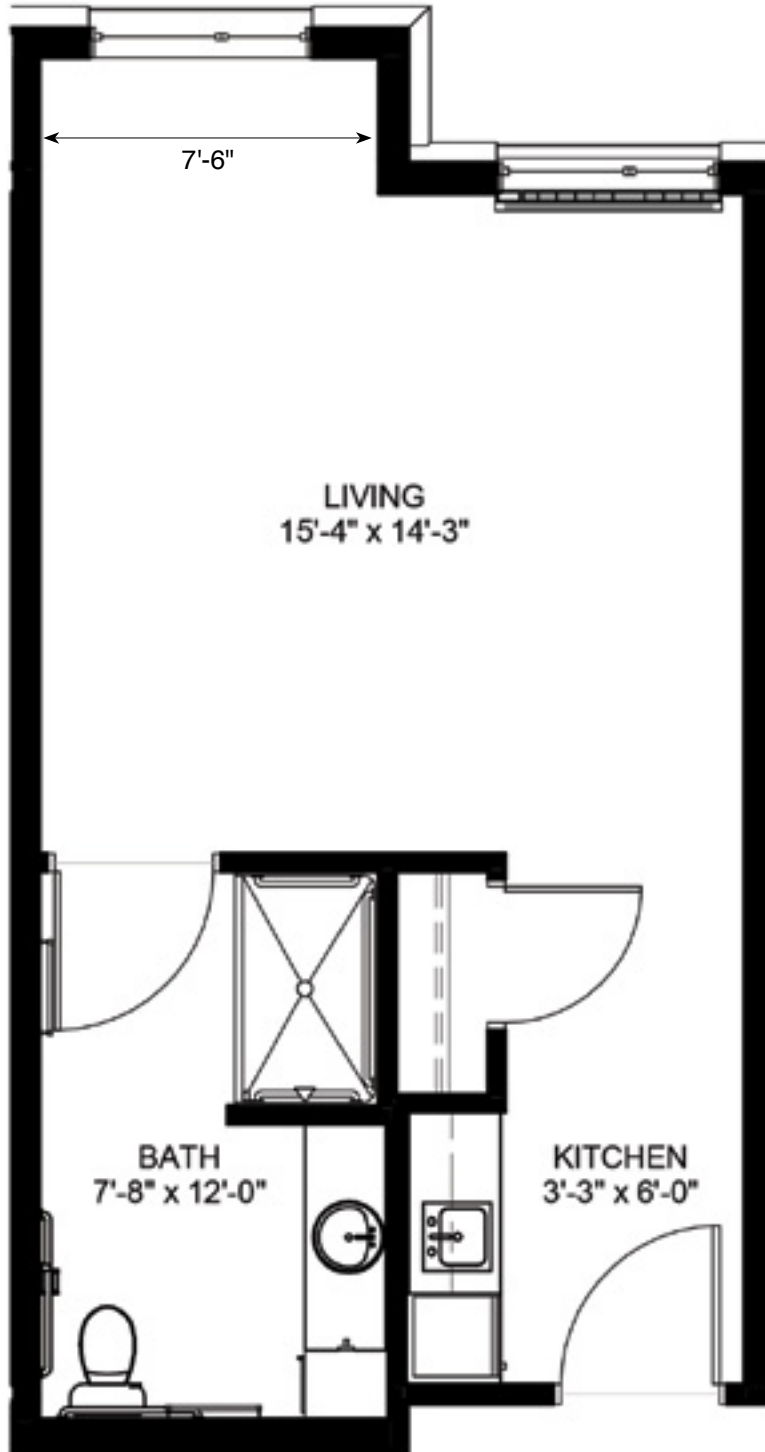


THE PILLARS

OF SHOREWOOD LANDING

SENIOR LIVING | ASSISTED LIVING | MEMORY CARE

GIDEON | MC | Studio | 460 SF | Apartment: 127



6000 Chaska Road | Shorewood, MN 55331 | 952-401-7444 | PillarsSeniorLiving.com/shorewoodlanding



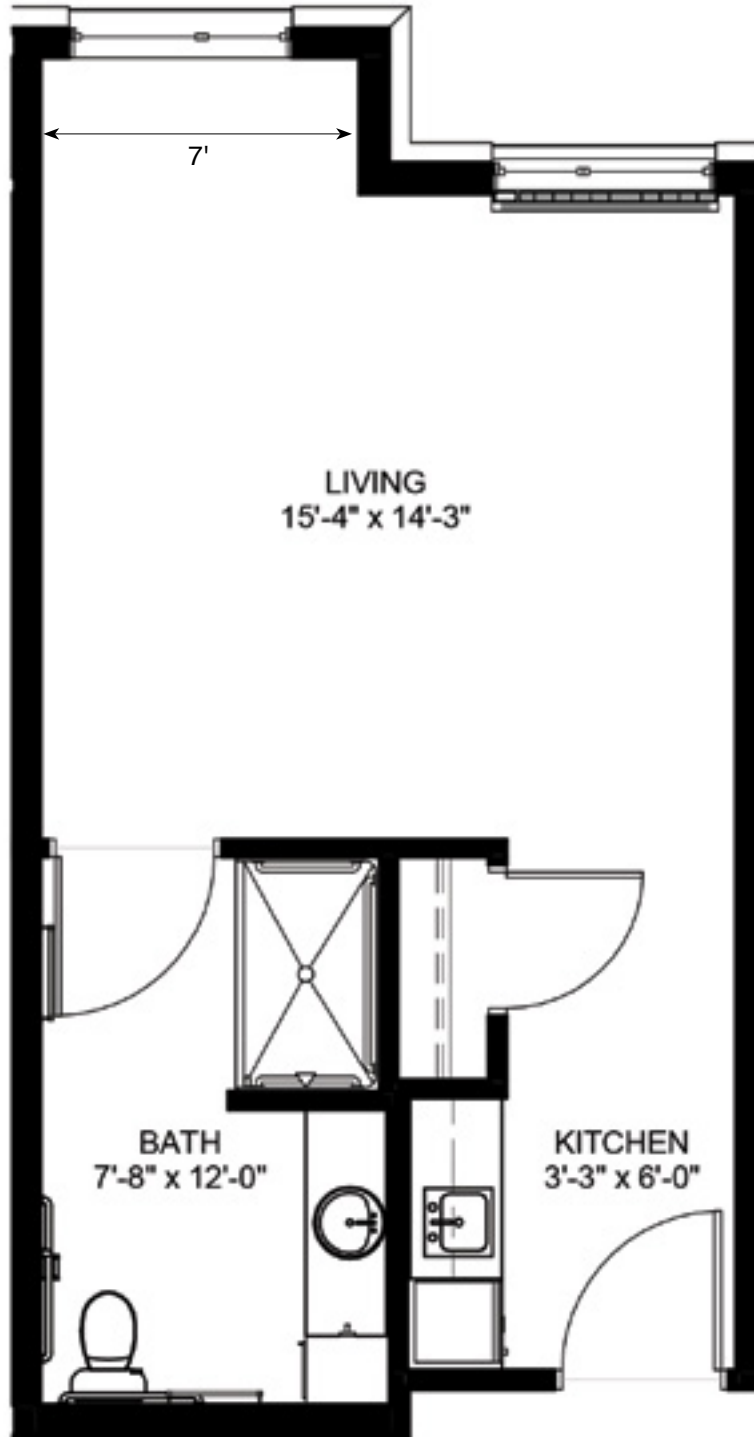


THE PILLARS

OF SHOREWOOD LANDING

SENIOR LIVING | ASSISTED LIVING | MEMORY CARE

GIDEON | MC | Studio | 460 SF | Apartment: 135



6000 Chaska Road | Shorewood, MN 55331 | 952-401-7444 | PillarsSeniorLiving.com/shorewoodlanding



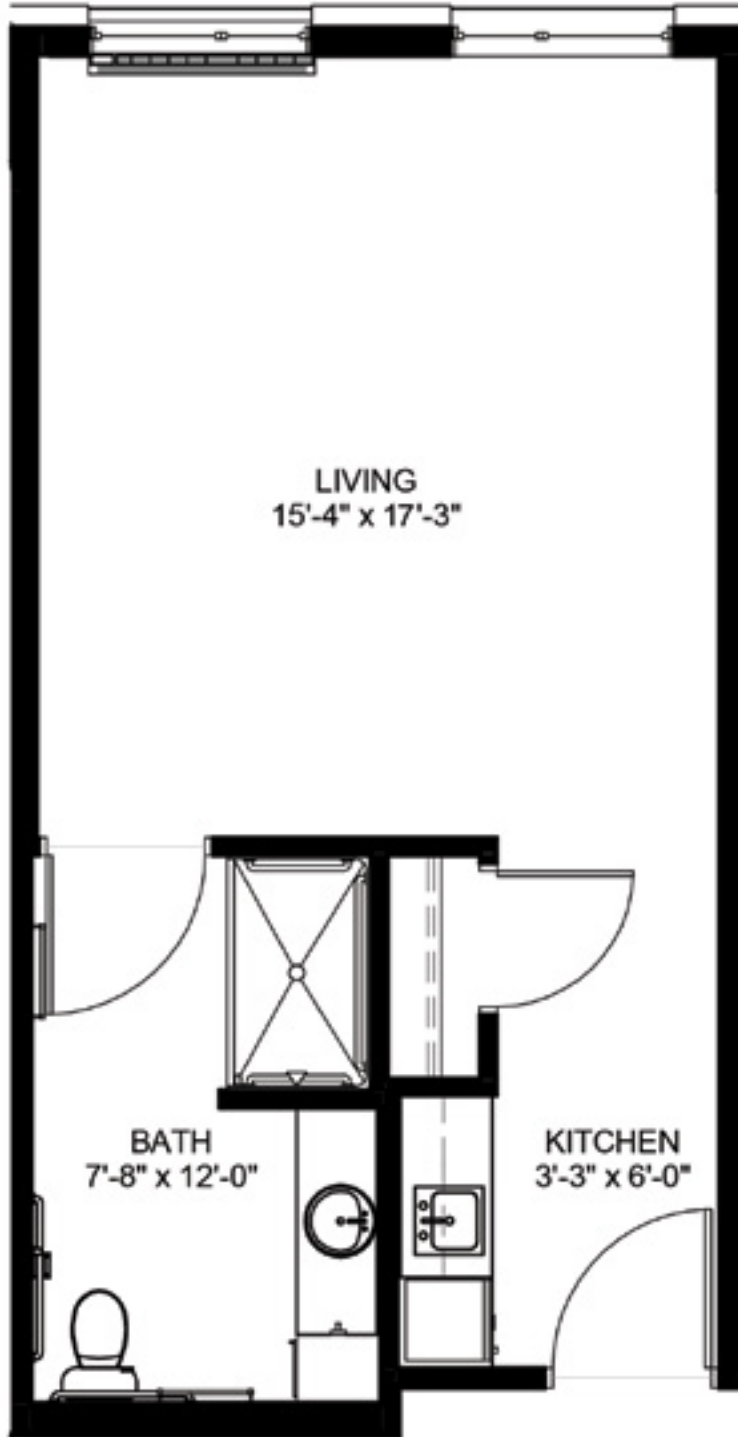


THE PILLARS

OF SHOREWOOD LANDING

SENIOR LIVING | ASSISTED LIVING | MEMORY CARE

GIDEON | MC | Studio | 480 SF | Apartment: 138



6000 Chaska Road | Shorewood, MN 55331 | 952-401-7444 | PillarsSeniorLiving.com/shorewoodlanding



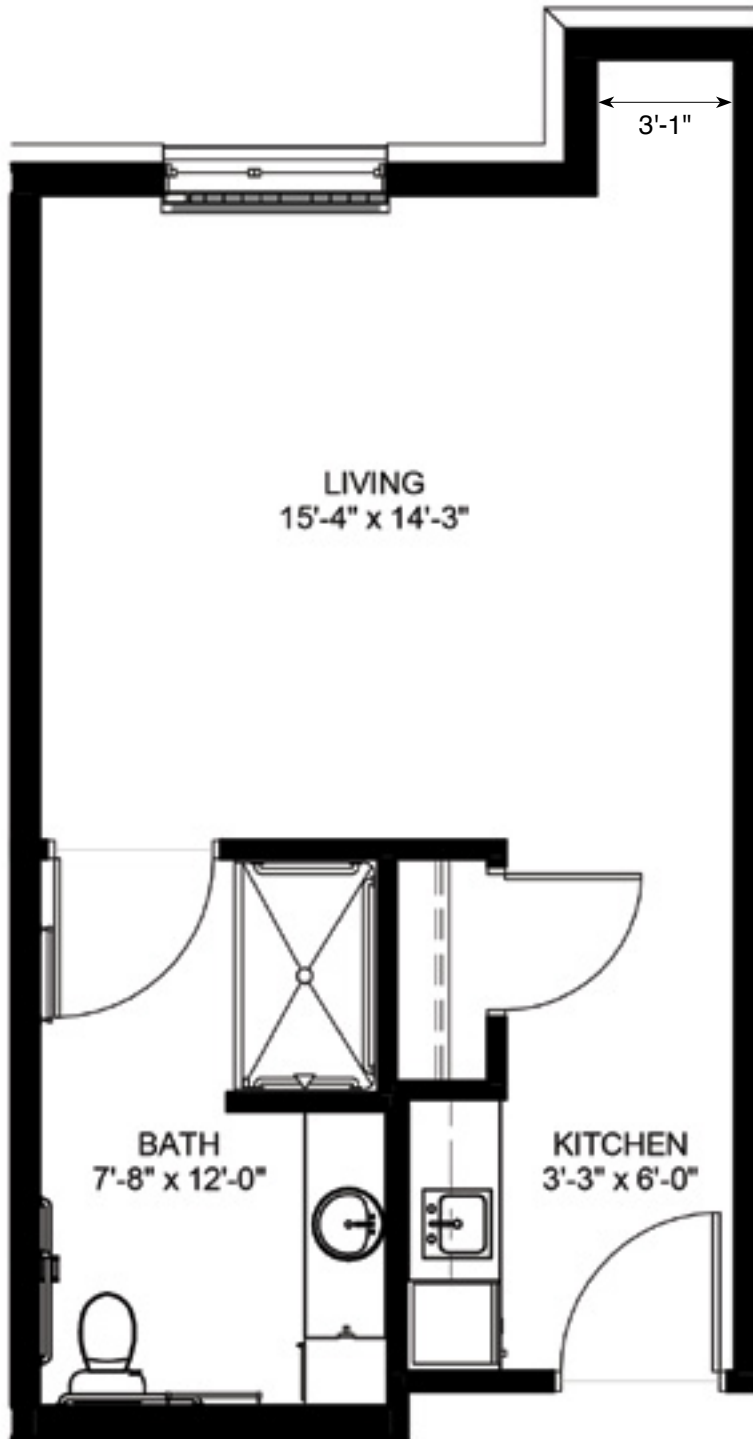


THE PILLARS

OF SHOREWOOD LANDING

SENIOR LIVING | ASSISTED LIVING | MEMORY CARE

GIDEON | MC | Studio | 450 SF | Apartment: 139



6000 Chaska Road | Shorewood, MN 55331 | 952-401-7444 | PillarsSeniorLiving.com/shorewoodlanding



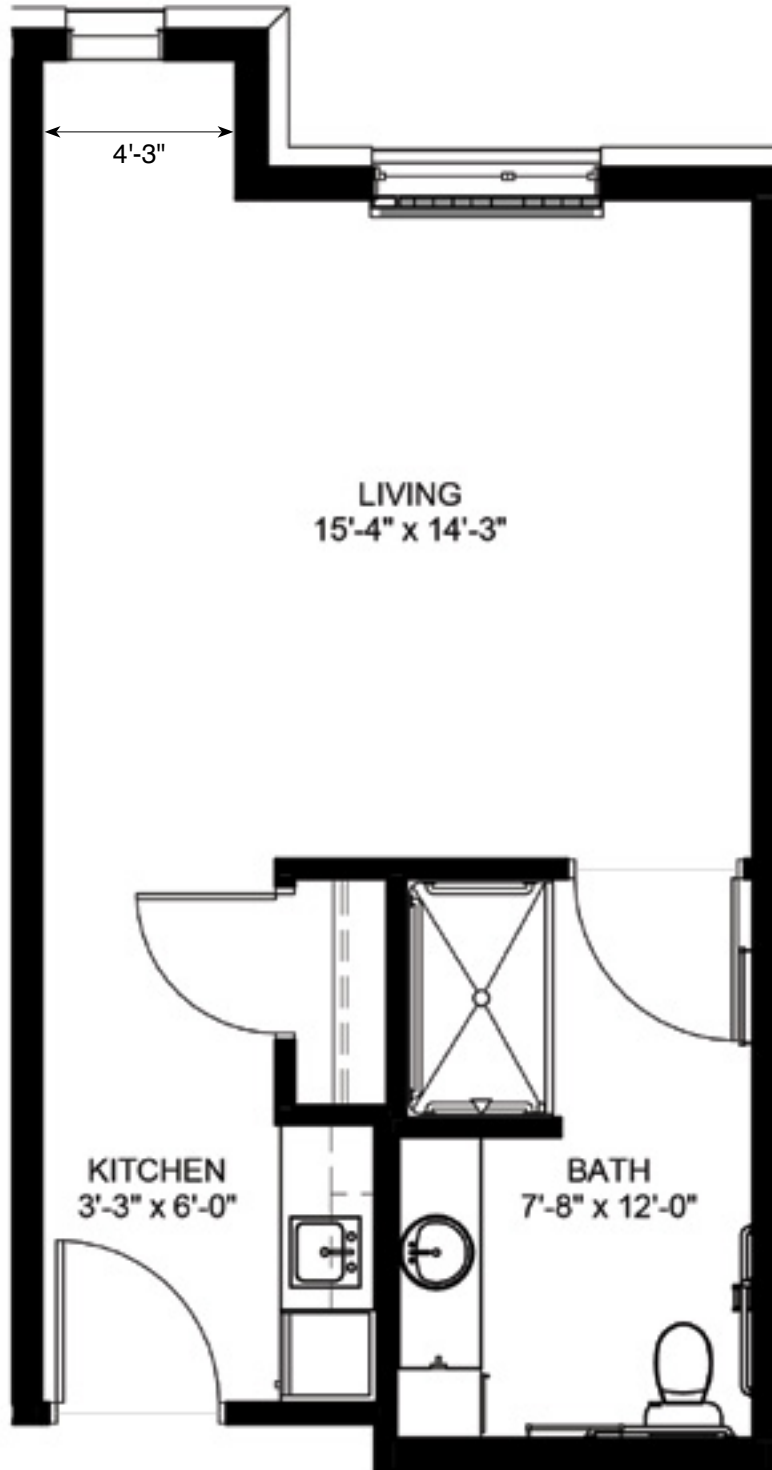


THE PILLARS

OF SHOREWOOD LANDING

SENIOR LIVING | ASSISTED LIVING | MEMORY CARE

GIDEON | MC | Studio | 445 SF | Apartment: 141



6000 Chaska Road | Shorewood, MN 55331 | 952-401-7444 | PillarsSeniorLiving.com/shorewoodlanding



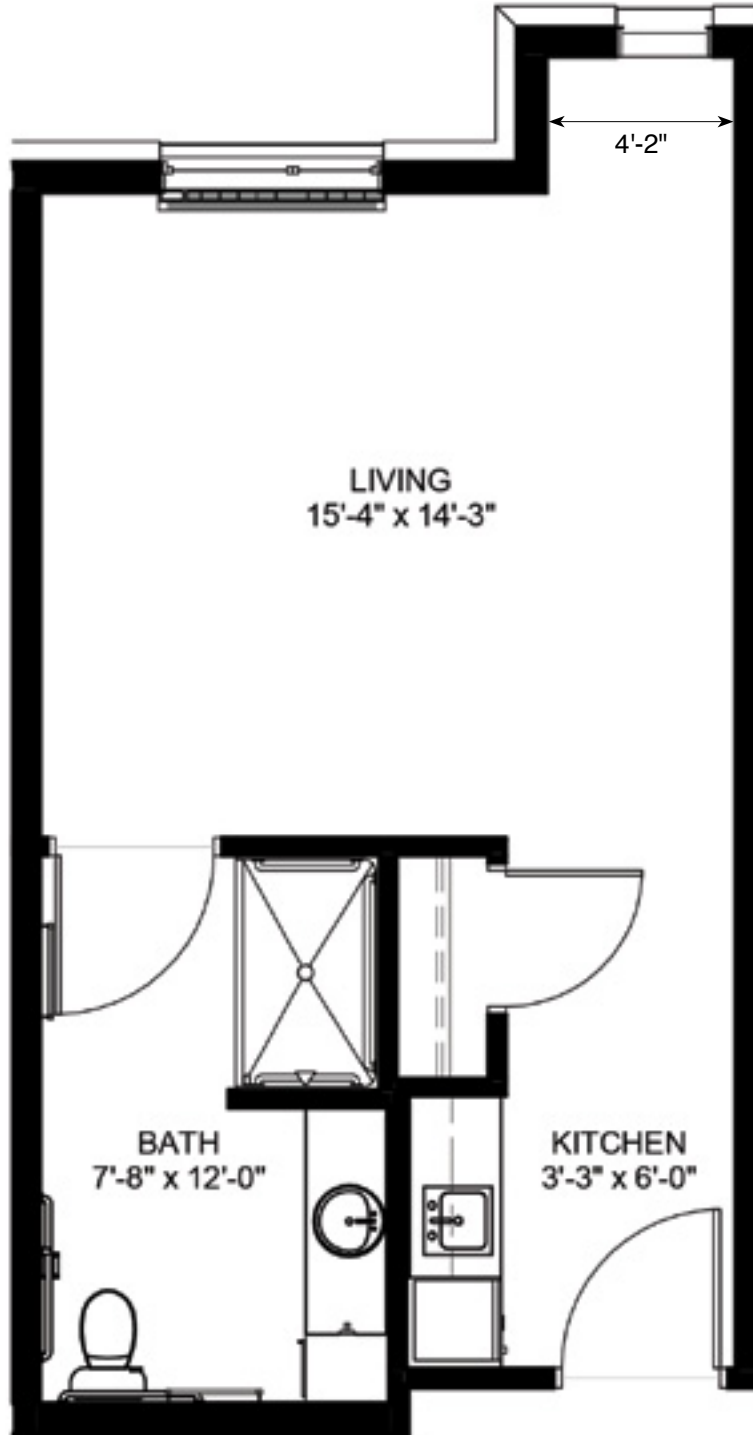


THE PILLARS

OF SHOREWOOD LANDING

SENIOR LIVING | ASSISTED LIVING | MEMORY CARE

GIDEON | MC | Studio | 450 SF | Apartment: 147



6000 Chaska Road | Shorewood, MN 55331 | 952-401-7444 | PillarsSeniorLiving.com/shorewoodlanding



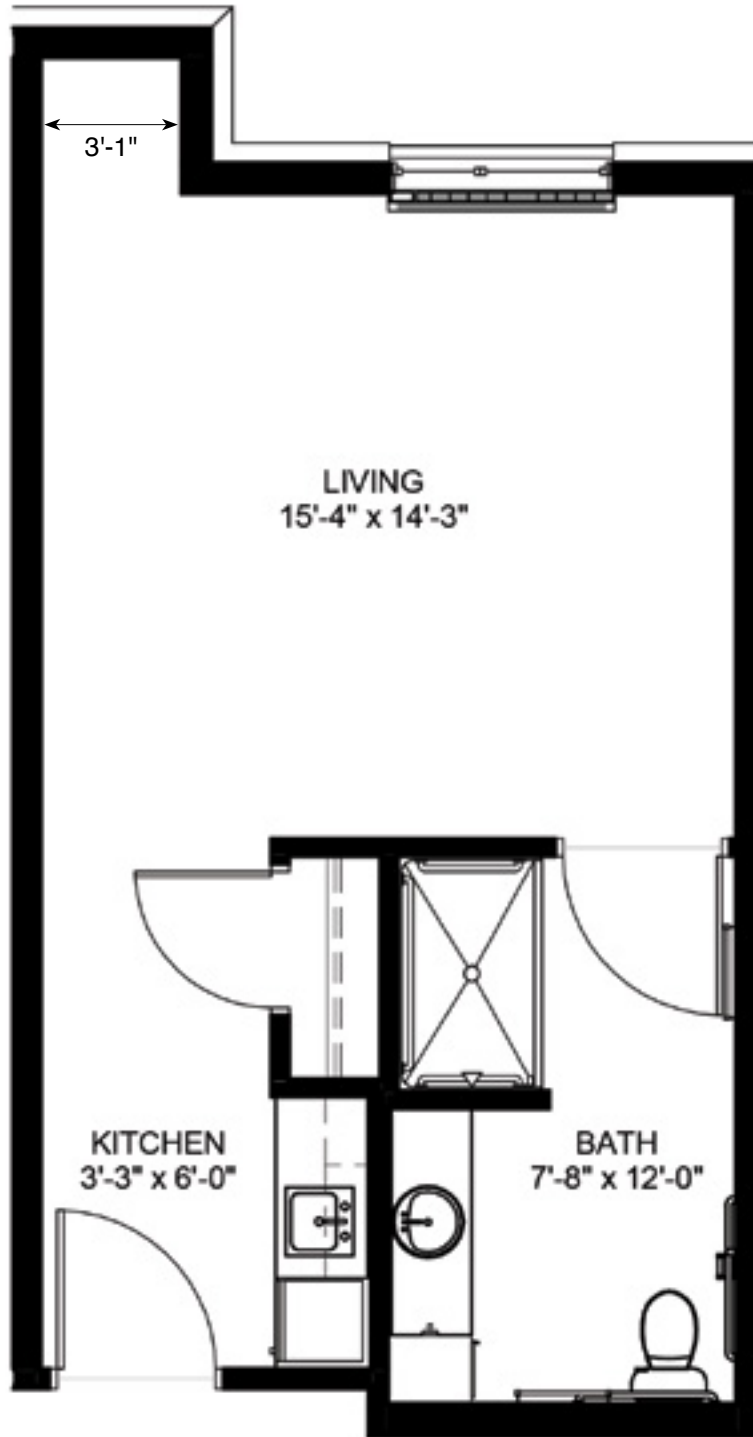


THE PILLARS

OF SHOREWOOD LANDING

SENIOR LIVING | ASSISTED LIVING | MEMORY CARE

GIDEON | MC | Studio | 445 SF | Apartment: 149



6000 Chaska Road | Shorewood, MN 55331 | 952-401-7444 | PillarsSeniorLiving.com/shorewoodlanding



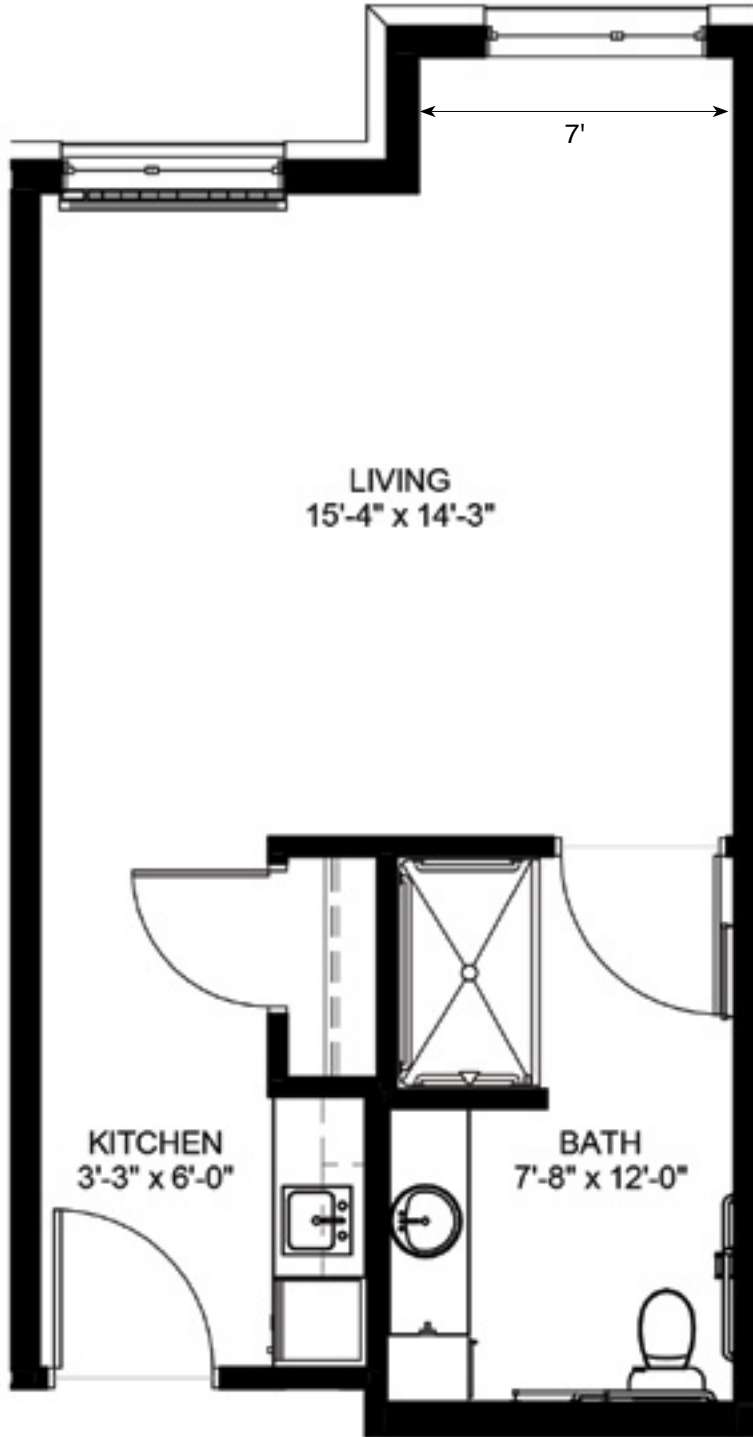


THE PILLARS

OF SHOREWOOD LANDING

SENIOR LIVING | ASSISTED LIVING | MEMORY CARE

GIDEON | MC | Studio | 460 SF | Apartment: 153



6000 Chaska Road | Shorewood, MN 55331 | 952-401-7444 | PillarsSeniorLiving.com/shorewoodlanding



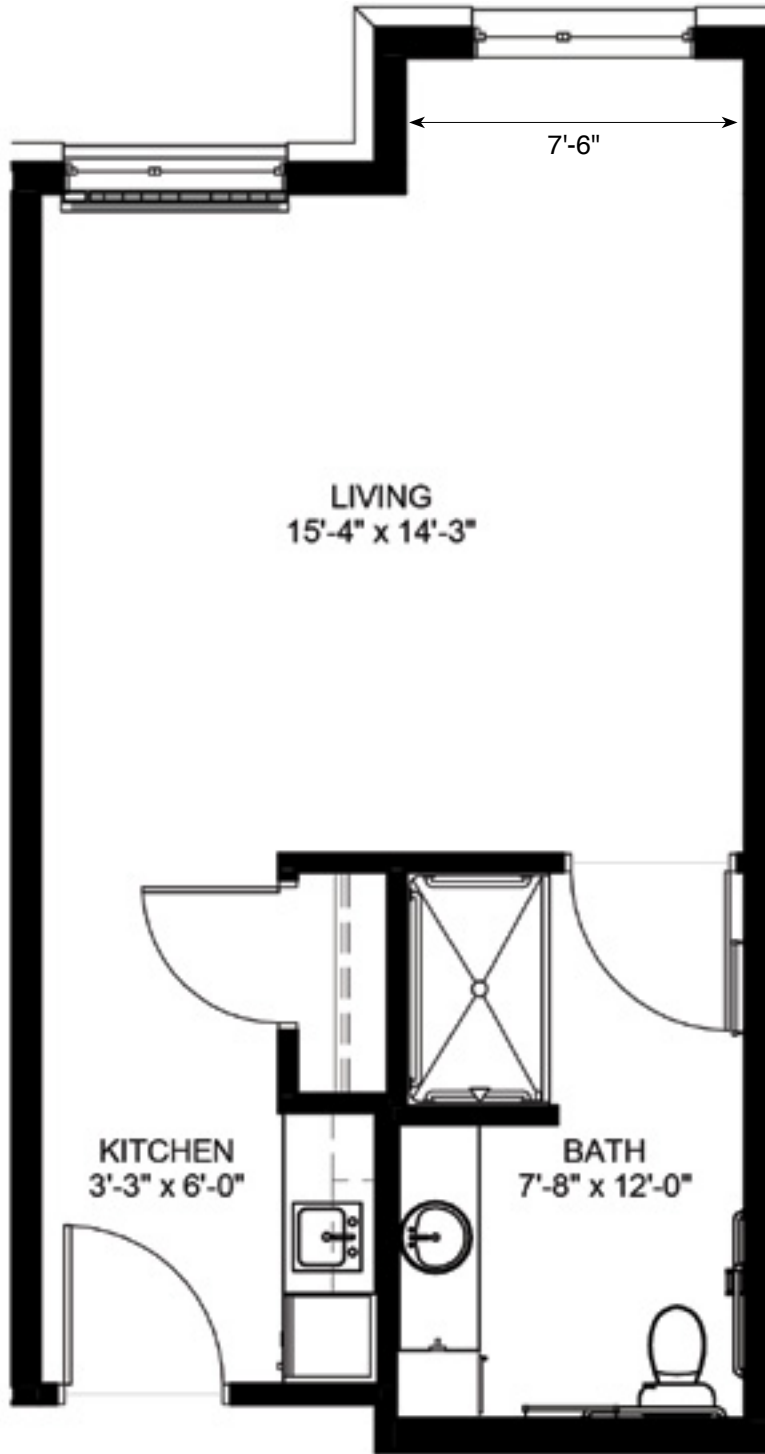


THE PILLARS

OF SHOREWOOD LANDING

SENIOR LIVING | ASSISTED LIVING | MEMORY CARE

GIDEON | MC | Studio | 460 SF | Apartment: 161



6000 Chaska Road | Shorewood, MN 55331 | 952-401-7444 | PillarsSeniorLiving.com/shorewoodlanding

