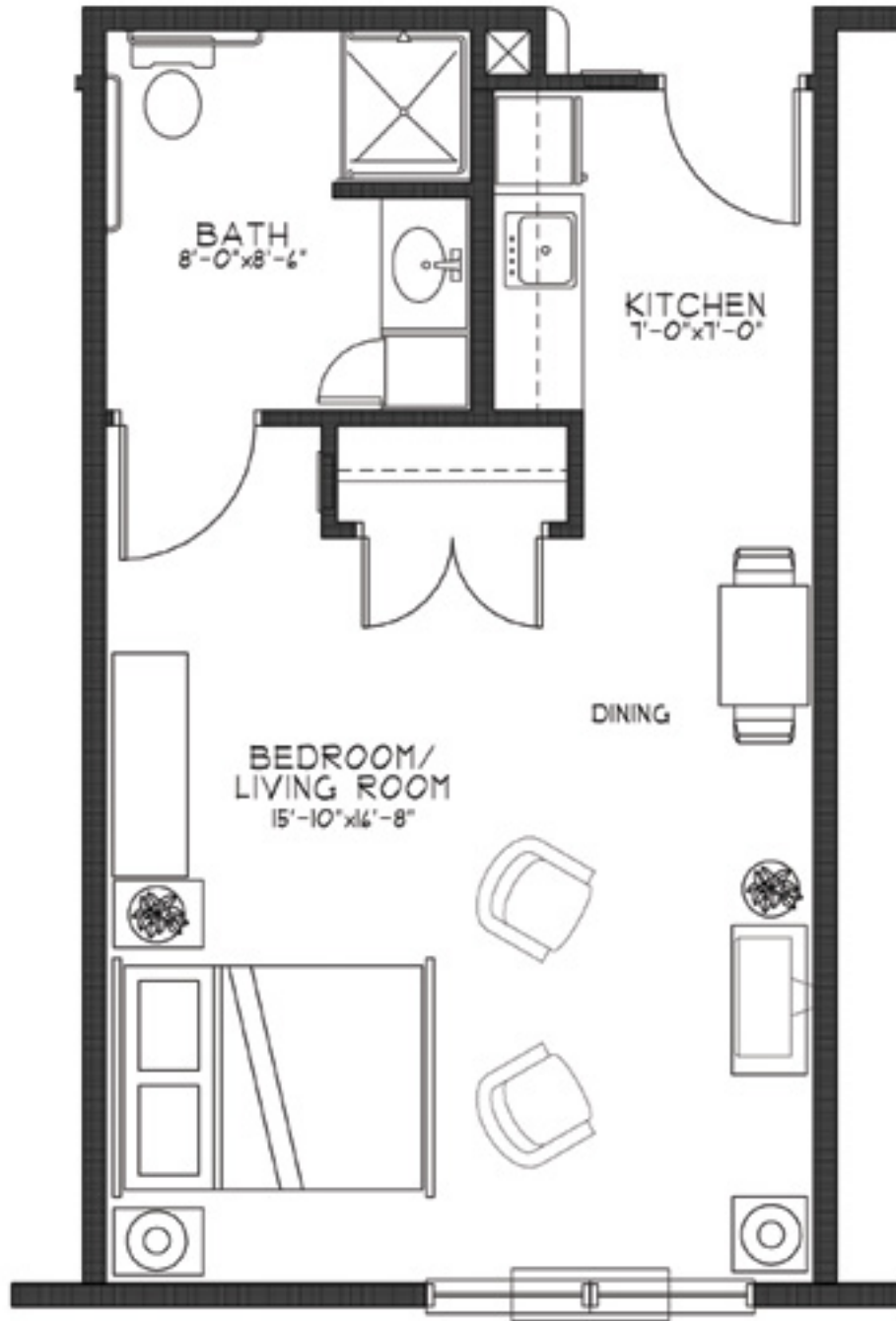




THE PILLARS OF HIGHLAND PARK

SENIOR LIVING | ASSISTED LIVING | MEMORY CARE

FINCH | MC | Studio | 459 SF | Apartments: 101, 102, 104, 106, 107, 113



1925 Norfolk Ave | St Paul, MN 55116 | 651-699-4038 | PillarsSeniorLiving.com/highlandparkmn



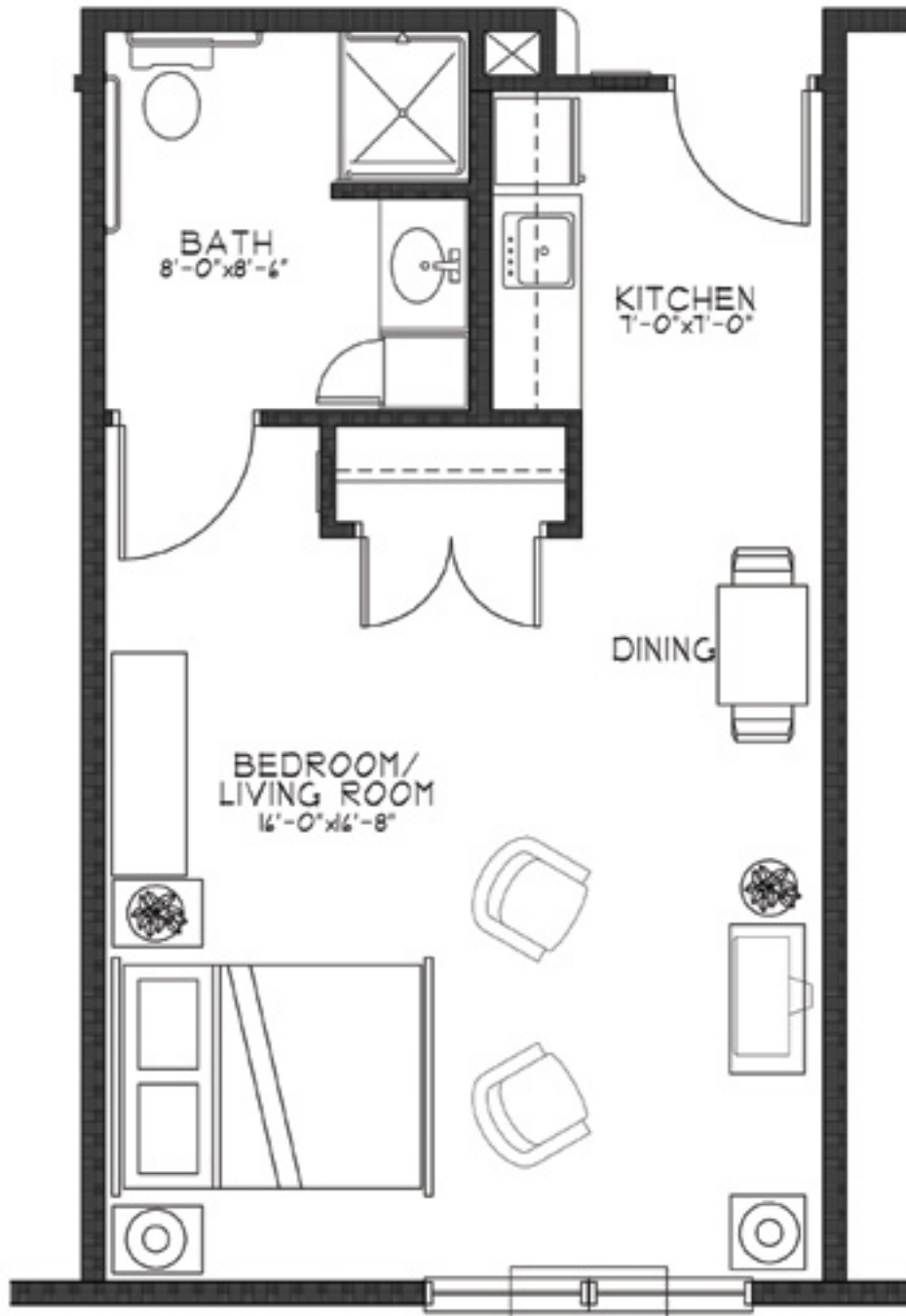
EBENEZER
Choices for vibrant senior living



THE PILLARS OF HIGHLAND PARK

SENIOR LIVING | ASSISTED LIVING | MEMORY CARE

ROBIN | MC | Studio | 465 SF | Apartments: 103, 105



1925 Norfolk Ave | St Paul, MN 55116 | 651-699-4038 | PillarsSeniorLiving.com/highlandparkmn



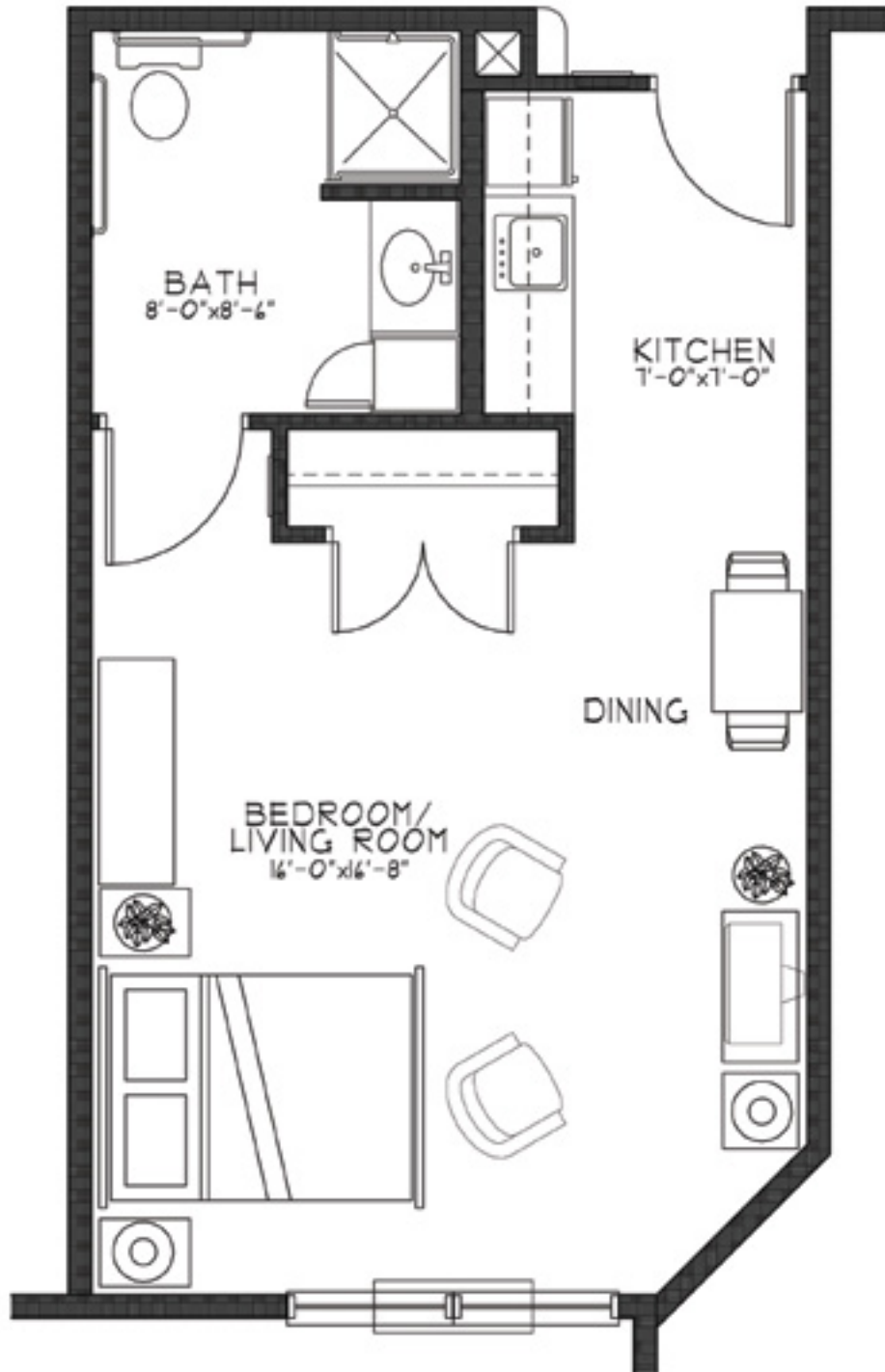
EBENEZER
Choices for vibrant senior living



THE PILLARS OF HIGHLAND PARK

SENIOR LIVING | ASSISTED LIVING | MEMORY CARE

WREN | MC | Studio | 452 SF | Apartments: 110, 112



1925 Norfolk Ave | St Paul, MN 55116 | 651-699-4038 | PillarsSeniorLiving.com/highlandparkmn

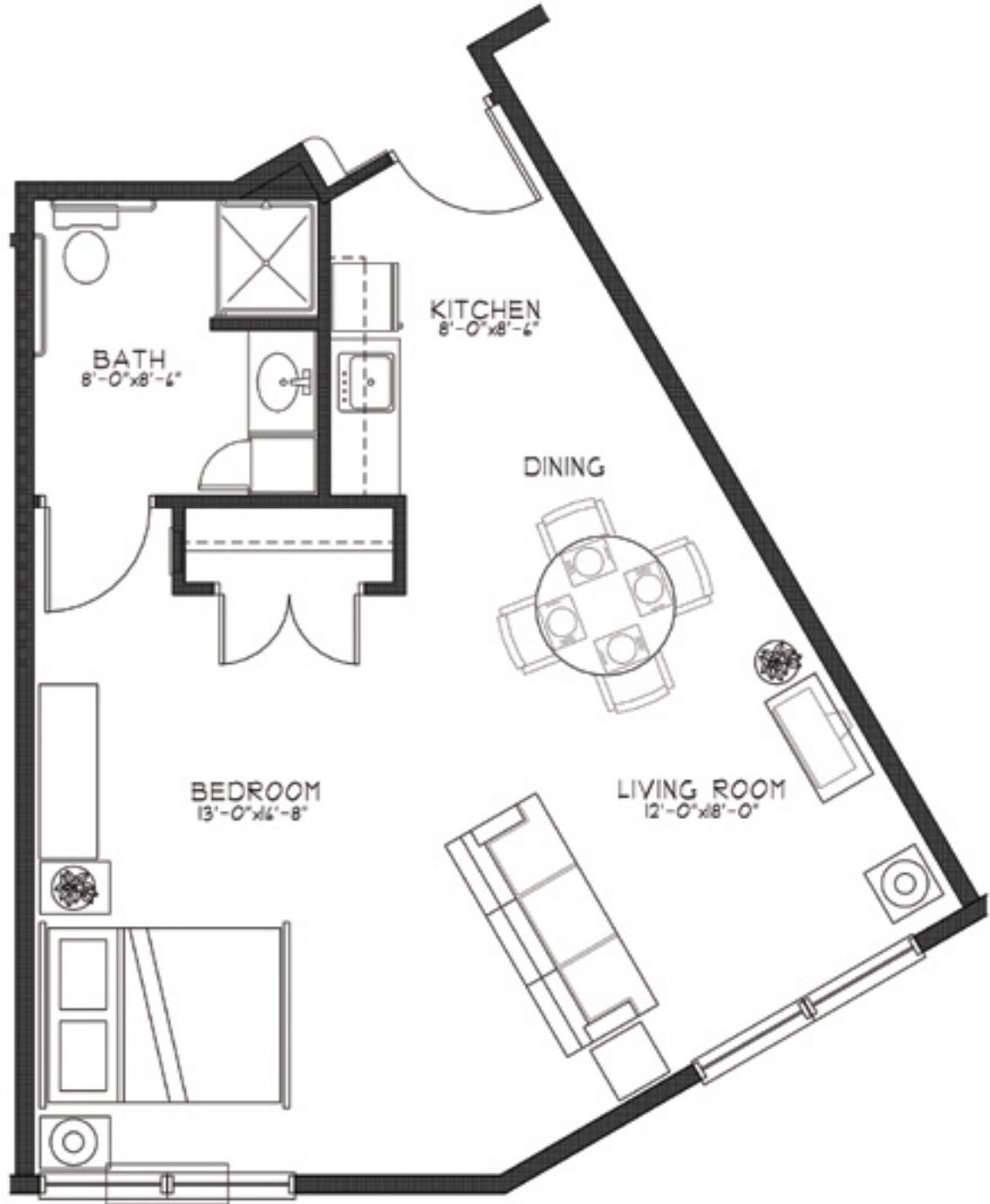




THE PILLARS OF HIGHLAND PARK

SENIOR LIVING | ASSISTED LIVING | MEMORY CARE

CARDINAL | MC | Studio | 619 SF | Apartment: 108 



1925 Norfolk Ave | St Paul, MN 55116 | 651-699-4038 | PillarsSeniorLiving.com/highlandparkmn



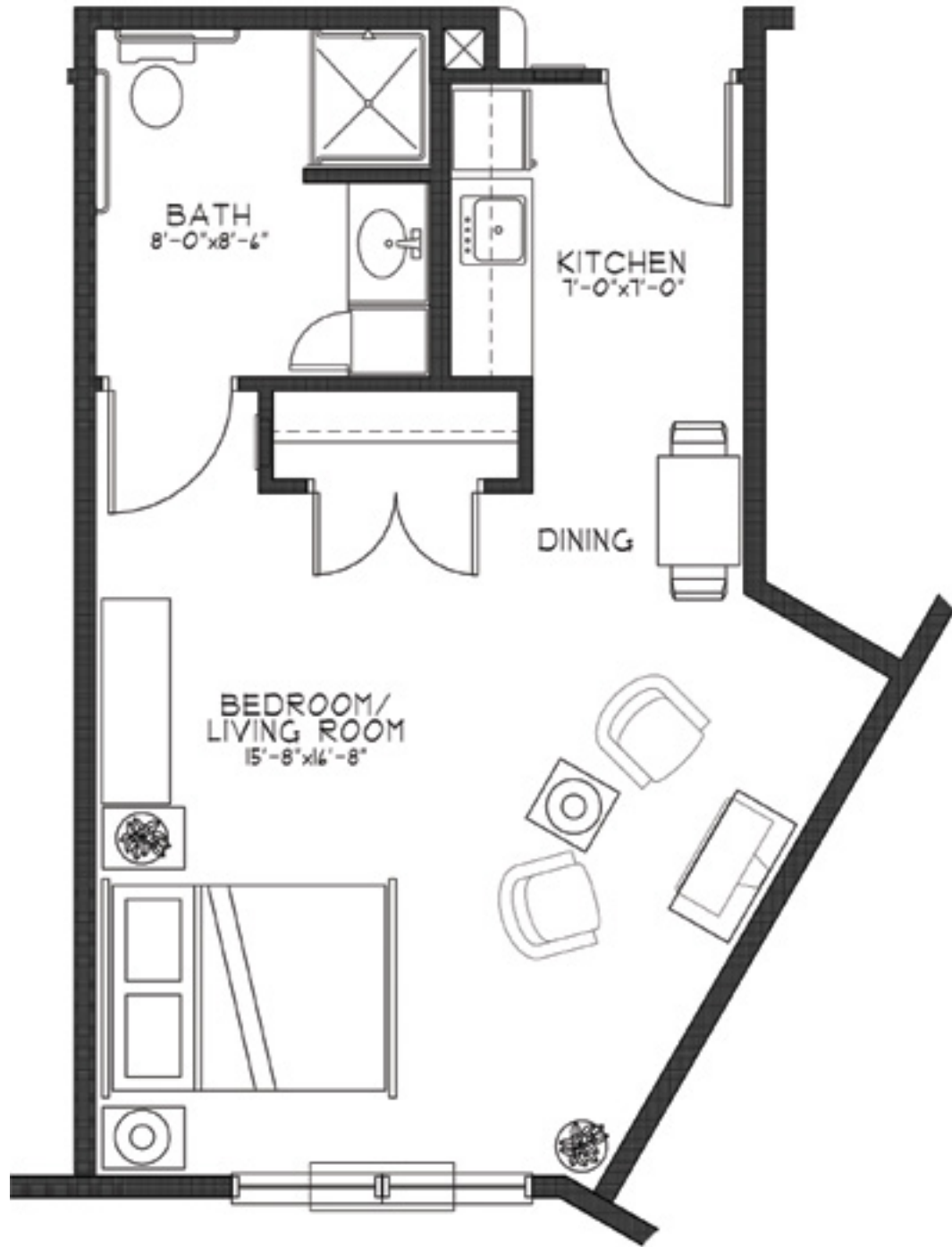
EBENEZER
Choices for vibrant senior living



THE PILLARS OF HIGHLAND PARK

SENIOR LIVING | ASSISTED LIVING | MEMORY CARE

ORIOLE | MC | Studio | 463 SF | Apartment: 114



1925 Norfolk Ave | St Paul, MN 55116 | 651-699-4038 | PillarsSeniorLiving.com/highlandparkmn

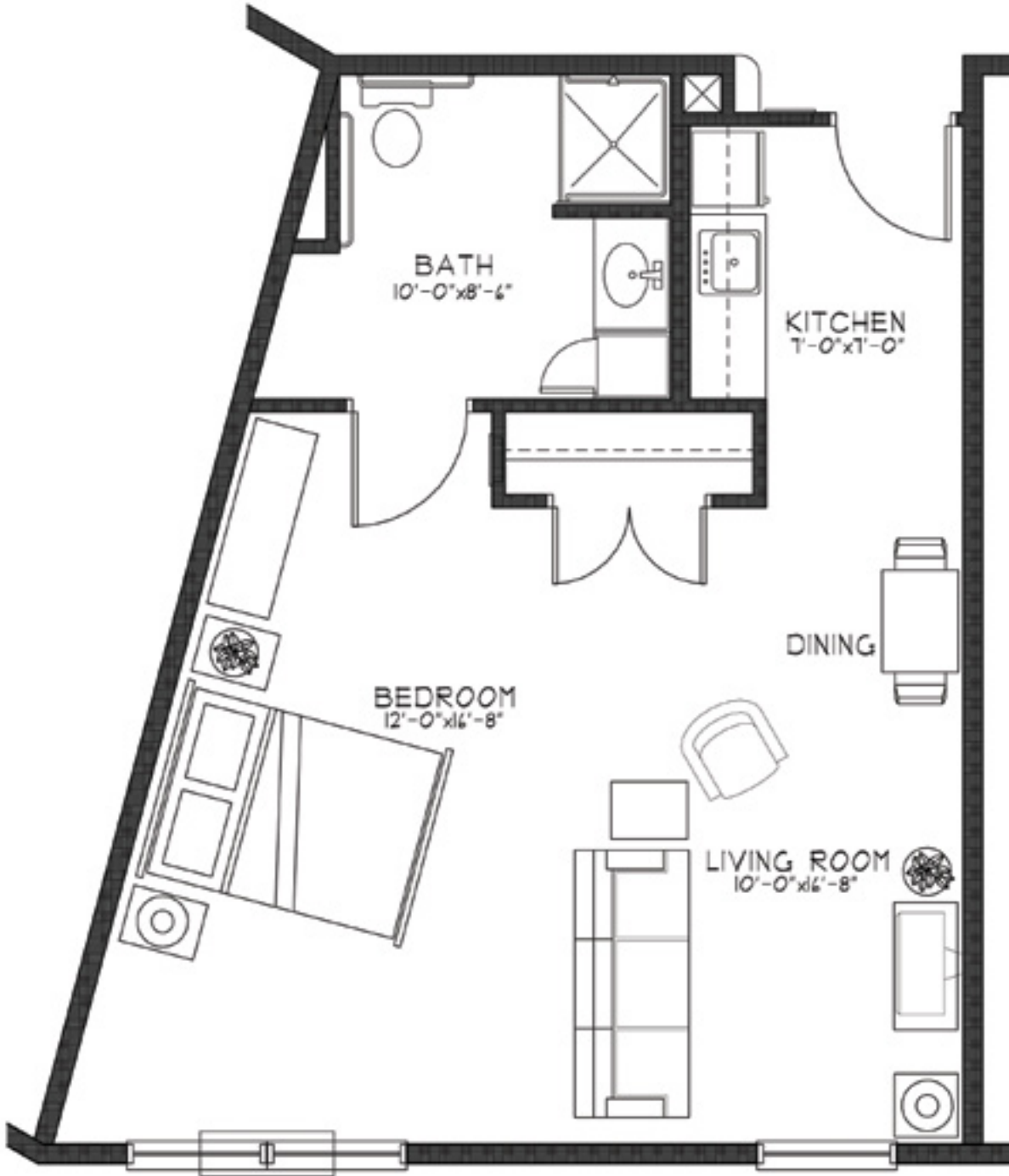




THE PILLARS OF HIGHLAND PARK

SENIOR LIVING | ASSISTED LIVING | MEMORY CARE

CHICKADEE | MC | Studio | 582 SF | Apartment: 115



1925 Norfolk Ave | St Paul, MN 55116 | 651-699-4038 | PillarsSeniorLiving.com/highlandparkmn

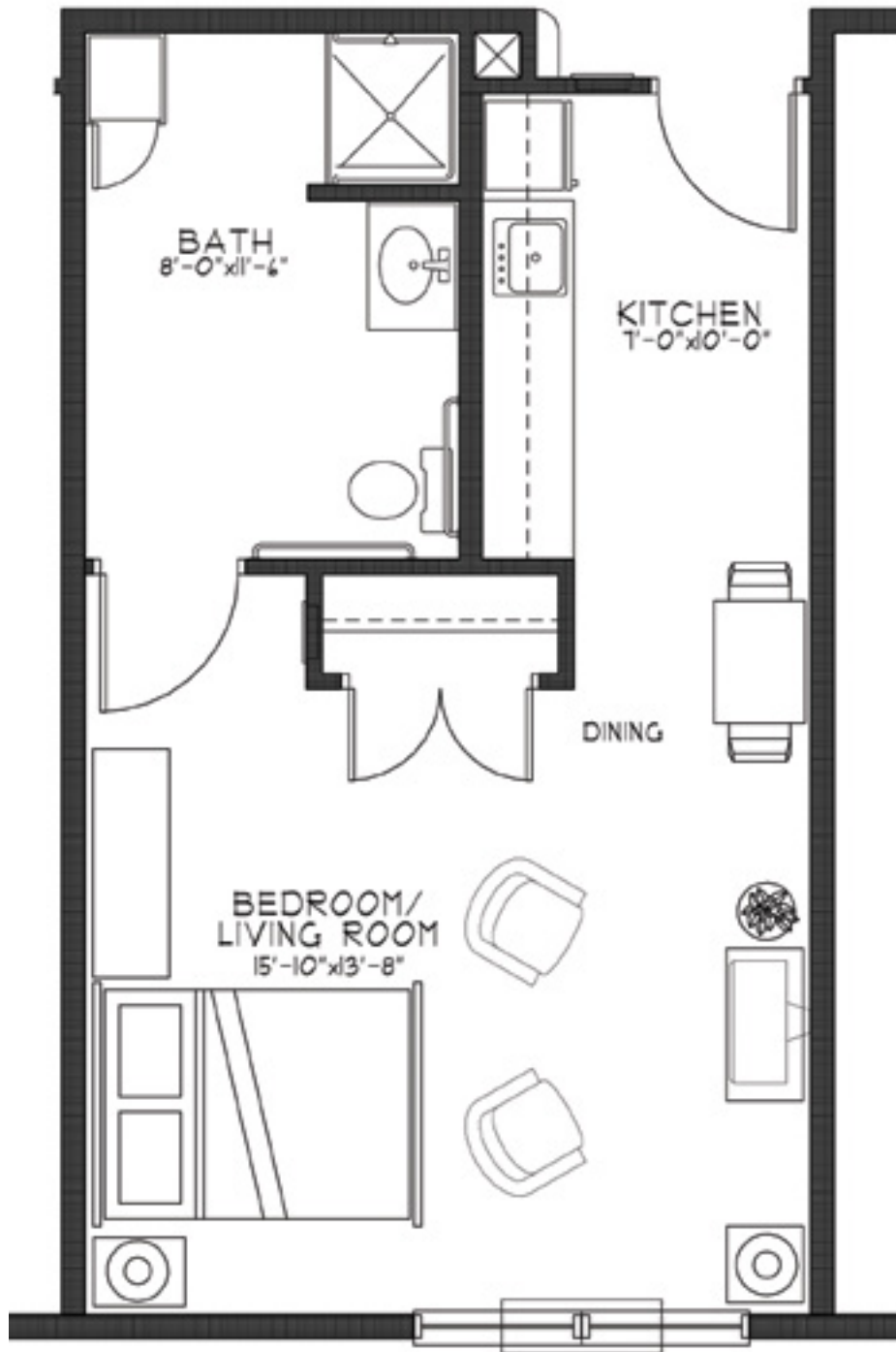




THE PILLARS OF HIGHLAND PARK

SENIOR LIVING | ASSISTED LIVING | MEMORY CARE

BLUE JAY | MC | Studio | 459 SF | Apartments: 109, 116 &



1925 Norfolk Ave | St Paul, MN 55116 | 651-699-4038 | PillarsSeniorLiving.com/highlandparkmn

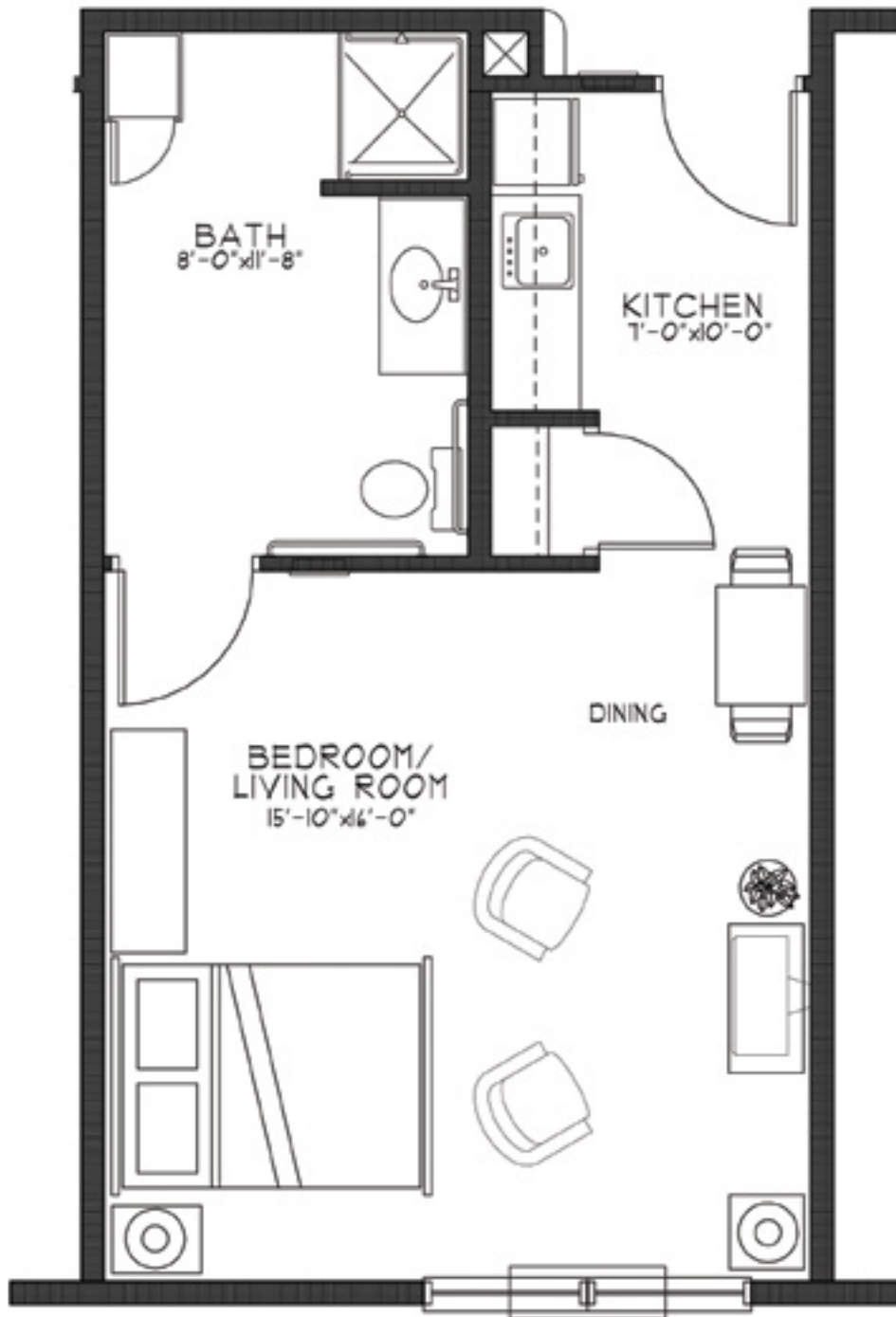




THE PILLARS OF HIGHLAND PARK

SENIOR LIVING | ASSISTED LIVING | MEMORY CARE

MEADOWLARK | MC | Studio | 459 SF | Apartment: 111



1925 Norfolk Ave | St Paul, MN 55116 | 651-699-4038 | PillarsSeniorLiving.com/highlandparkmn

